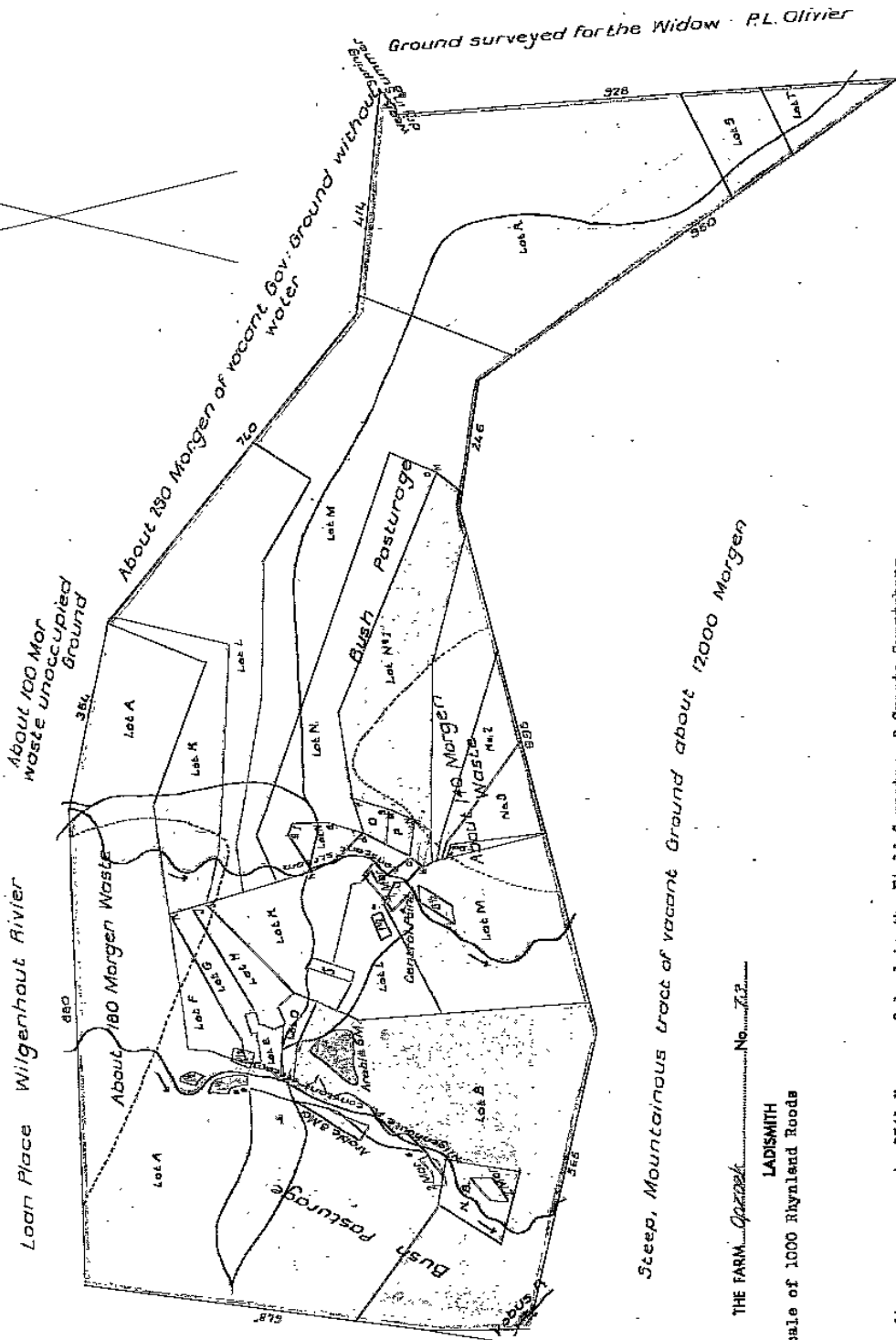


Ground surveyed for the Missionary Institution at "Zoor"



Steep, Mountainous tract of vacant Ground about 12000 Morgen

THE FARM *Gazank* No. *712*

LADSMITH
Scale of 1000 Rhyland Roods

The diagram represents 2741 Morgen of land in the Field Cornetcy of Groot Swarteburg, district of Swellendam, whereof 2021 form the Loan Place "Opsok" and 720 are Government Ground.

- Bounded N by the Loan Place Wilgenhout Rivier and by waste Government ground extending to the beacons of the ground formerly surveyed for J.P. Swart;
 - E by ground surveyed for the Widow J.P. Olivier;
 - S by waste land extending to the Loan Place Daniëls Kraal distant about 2400 Rooden;
 - W by ground formerly surveyed for the missionary Institution at "Zoor,"
- Containing about 33 Morgen Arable and 320 Morgen waste. The remainder being bush pasturages. Surveyed for Jacobus Oosthuizen $\frac{1}{4}$ share
Gideon Jac. Joubert $\frac{1}{4}$ share
Isaac Noortje
Ookert Jon. Olivier $\frac{1}{4}$ share
Andrius Joh. van Tonder $\frac{1}{4}$ share

B S

by (Sgd.) J. Rawstorne,
Sw. Surveyor.

Copied from diagram relating to *Gazank*, Deed No. *SK.9.13-65* dated *1/11/1838* for *Survivor-General* *22/8/1967*

for list of enclosures see back of original