



Cobus Thomas
0840960643
cobust@dpg.co.za



Hasiena Hassen
0846178688

hasienahassen@dpg.co.za

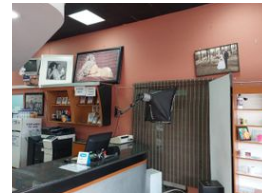
Contact Vereeniging

016 4232876

Vision 21, Industrial Park,
Shop 26,
Steel Road,
Duncanville,
Vereeniging



Web Ref DPC552



R4,900,000

Monthly Rates R15,000 Excl. VAT



Investment Retail Building

This very lucrative property investment is located in the very best part of Sasolburg CBD. Stable, Long-term tenants for many years. The building has been well maintained and maintenance costs are low. The improvements include four main retail shops and nine lettable offices. Gross lettable area 1007 square meters. A unique feature is the large strongroom basement. The entire building has central air-conditioning.

Purchase the property out of the company or purchase the property holding company and save VAT, required clearances will be provided. Proof of financial capability will be a requirement. Financial information will only be provided to acceptable evidence of

Features

Zoning Commercial

Sizes

Floor Size 588m²
Land Size 588m²

