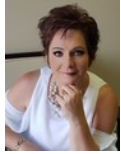




Lisa Vermaak
0662157674
lisavermaak@dpg.co.za



Celia Kotze
083 442 8016
celiakotze@dpg.co.za

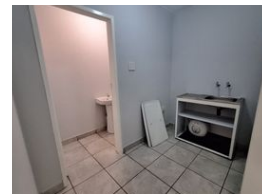
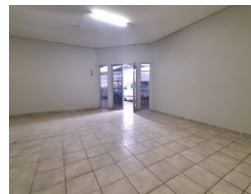
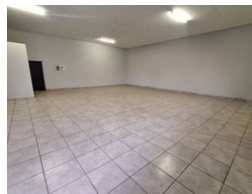
Contact Rustenburg

014 5942402

Mystic Blue Office Park
220 Beyers Naude Drive
Rustenburg
0229



Web Ref DPC779



R129 per m²

Gross Monthly Rental R16,800 Excl. VAT

0 0

Commercial Property for Rent – Rustenburg Central at Prime Auto

Key Features:

Size: 130m² of flexible office or storage space.

Amenities: Includes its own kitchen and bathroom for added convenience.

Utilities: Water included and pre-paid electricity.

Security: Equipped with cameras and internal alarm systems for enhanced security.

Usage: Ideal for office or storage use only (retail operations not permitted).

A practical and secure solution for businesses looking for a central and well-equipped location and ample parking space.

Features

Zoning Commercial

Exterior

Security Yes

Sizes

Floor Size 130m²

