



Michelle Bow
0827429033
michellebow@dpg.co.za

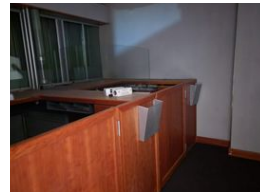
Contact Vanderbijlpark /
Sasolburg

016 4232876

Vision 21, Industrial Park,
Shop 26,
Steel Road,
Duncanville,
Vereeniging



Web Ref DPC453



R48,150 per m²

Gross Monthly Rental R48,150 Excl. VAT

0 0

Large Office Space Available for Rent- Ideal for Consultations, Collage and Financial Institution

Rental per floor - Different floors available estimated 600 meters squared each
Multiple offices in cubical style with reception
Ladies and Gents bathrooms
Kitchenette
Walk in safe
Elevators and stairs available
Parking available at additional cost

Features

Zoning Commercial

