



**Michelle Bow**  
0827429033  
michellebow@dpg.co.za

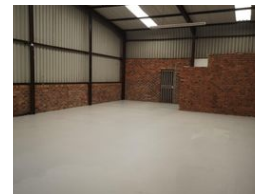
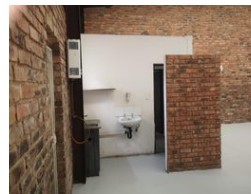
Contact Meyerton

016 0042352

24 Glynn Street  
Rothdene,  
Meyerton,  
1961



Web Ref DPC536



**R45 per m²**

**Gross Monthly Rental R6,800 Excl. VAT**

0 2

Mini Workshop available in Daleside Industrial Complex

Estimated 150m² in total per unit

Each unit includes:

- 1 x office
- 1 x kitchenette
- 2 x toilets
- 1 x shower
- Three phase electricity: 60 amps
- 2 x parking spaces

Rental excludes utilities, security and municipal services (billed separately)  
Double deposit as per instruction

Viewings by appointment only

## Features

**Zoning** Industrial

### Interior

Power 3 Phase	Yes
Power Amps	60

### Exterior

Security	Yes
Open Parking Bays	2

### Sizes

Floor Size	150m²
Land Size	150m²

