



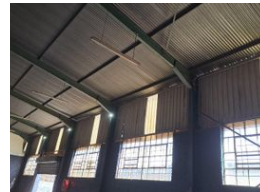
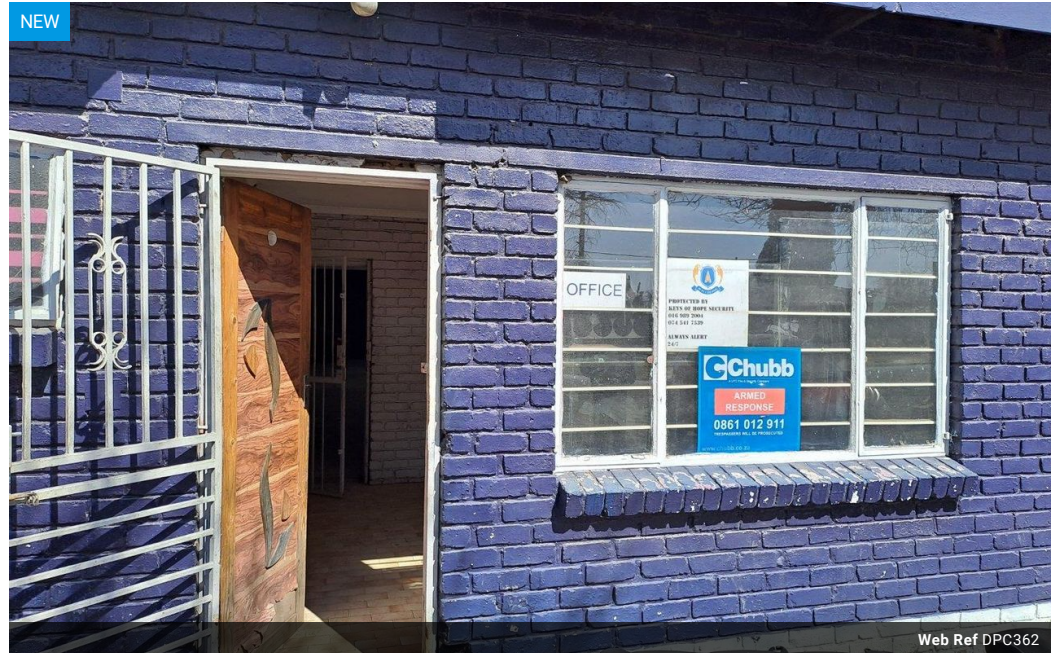
Michelle Bow
0827429033
michellebow@dpg.co.za

Contact Vereeniging

016 4232876

Vision 21, Industrial Park,
Shop 26,
Steel Road,
Duncanville,
Vereeniging

300m² Workshop To Let in Duncanville



R28 per m²

Gross Monthly Rental R11,500 Excl. VAT

0 3

Ideal for the small business on the main road

Ideal, street facing unit with an estimated 100m² exclusive yard
Estimated 300 Square meters, roll-up door, office/reception.
3 Phase electricity
VAT Inclusive in rental price

Features

| | | | | | |
|----------------------|--------------|-------------------|---|--------------|-------------------|
| Building Name | GCJ Building | | | Sizes | |
| Zoning | Industrial | | | Floor Size | 300m ² |
| Interior | | Exterior | | Land Size | 400m ² |
| Power 3 Phase | Yes | Open Parking Bays | 3 | | |
| Power Amps | 60 | | | | |

