

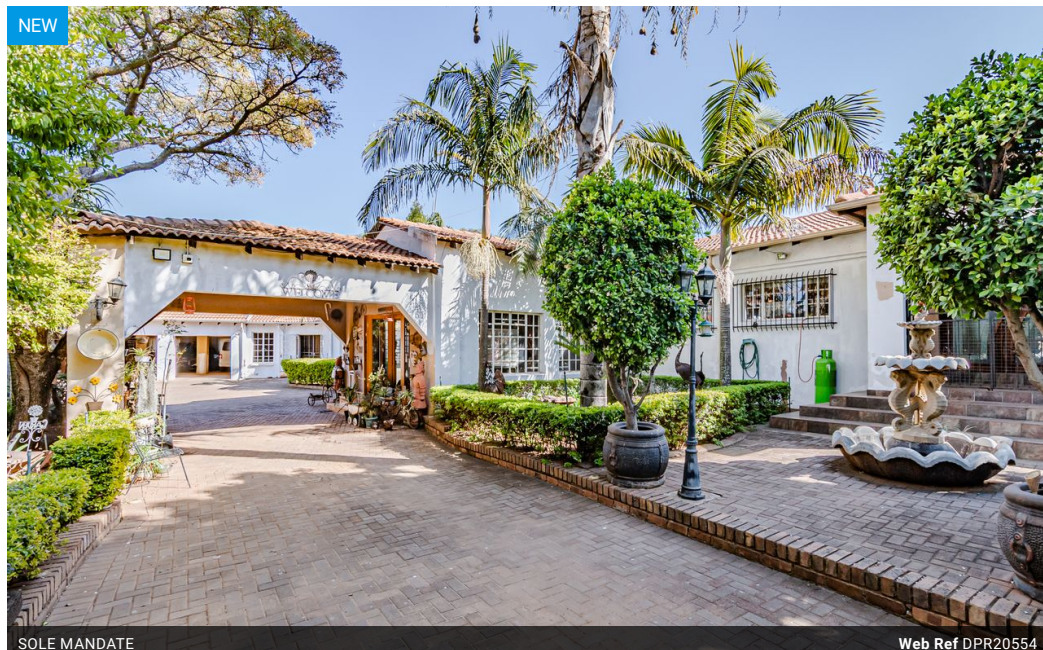


Leonette Van Wyk
066 202 9700
leonettevwyk@dpg.co.za

Contact Pretoria Moot

012 3323677

1170 Moulton Ave
Waverley
Pretoria
0186



SOLE MANDATE

Web Ref DPR20554



R6,800,000

Monthly Bond Repayment R69,035.57

Calculated over 20 years at 10.75% with no deposit.

Transfer Costs R611,766.00 **Bond Costs** R70,535.00

These calculations are only a guide. Please ask your conveyancer for exact calculations.

5 5 6

Grand Multi-Dwelling Property with Exceptional Amenities and Development Potential

Welcome to a rare opportunity to own a truly exceptional estate — a sanctuary of space, style, and versatility. This expansive property boasts five generously sized bedrooms, each with its own en-suite bathroom, ensuring privacy and comfort for the entire family. Designed with flow and functionality in mind, the home features an elegant open-plan lounge and formal dining area, a fully fitted kitchen with a separate scullery, a dedicated laundry room, sunroom, storeroom, and an entertainment lounge ideal for hosting in style. A guest cloakroom adds further convenience.

Step outside to discover two distinct entertainment zones: a thatched lapa complete with a built-in bar and jacuzzi, and a second open-air lapa equipped with a sink — perfect for summer gatherings or relaxed weekend braais.

A separate two-bedroom flatlet offers...

Features

Pets Allowed	Yes		
Interior		Exterior	Sizes
Bedrooms	5	Garages	Land Size
Bathrooms	5	Carports / Parkings	8,000m²
Kitchens	1	Security	
Recep. Rooms	3	Dom. Accom.	
Furnished	No	Pool	
		Views	

