

## 2 Bedroom House For Sale in Karenpark



**Caroline De Beer**  
082 414 3963  
carolinedebeer@dpg.co.za

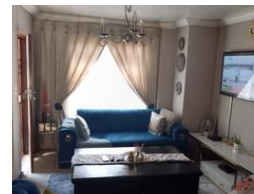
Contact Head Office - Dormehl  
Lite

012 0000000

1170 Moulton Avenue  
Waverley  
0184



Web Ref DPR21324



**R820,000**

2 Bedrooms 2 Bathrooms

**Monthly Bond Repayment** R8,186.72

Calculated over 20 years at 10.5% with no deposit.

**Transfer Costs** R28,334.00 **Bond Costs** R21,450.00

These calculations are only a guide. Please ask your conveyancer for exact calculations.

**Monthly Levy** R1 **Monthly Rates** R600 **Special Levy** R1

### Move-In Ready Karenpark Property with Great Features

Modern 2-Bedroom Home in Karenpark

Let me introduce you to this lovely Starter home, perfectly located close to schools, public transport, and main roads for your convenience.

Property Features:

- 2 Bedrooms
- 2 Bathrooms
- Comfortable lounge and small dining area
- Modern kitchen
- Wendy house for extra storage or workspace
- Double carport
- Pet-friendly with a neat garden
- Fibre internet available

Don't miss out on this fantastic property — arrange your viewing today!

### Features

|                     |     |                     |       |              |
|---------------------|-----|---------------------|-------|--------------|
| <b>Pets Allowed</b> | Yes |                     |       |              |
| <b>Interior</b>     |     | <b>Exterior</b>     |       | <b>Sizes</b> |
| Bedrooms            | 2   | Carports / Parkings | 2     | Floor Size   |
| Bathrooms           | 2   | Security            | No    | Land Size    |
| Kitchens            | 1   | Pool                | No    | 204m²        |
| Recep. Rooms        | 2   | Views               | False |              |
| Furnished           | No  |                     |       |              |

