



**Caroline De Beer**  
082 414 3963  
carolinedebeer@dpg.co.za

Contact Head Office - Dormehl  
Lite

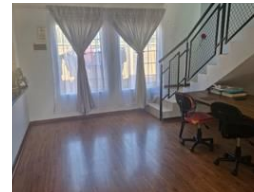
012 0000000

1170 Moulton Avenue  
Waverley  
0184

## 4 Bedroom Apartment For Sale in Theresapark



Web Ref DPR21211



**R1,295,000**

4 Bedrooms 2 Bathrooms 2 Carports

**Monthly Bond Repayment** R12,929.02  
Calculated over 20 years at 10.5% with no deposit.

**Transfer Costs** R37,569.00 **Bond Costs** R27,105.00

These calculations are only a guide. Please ask your conveyancer for exact calculations.

**Monthly Levy** R2,200 **Monthly Rates** R750 **Sectional Title Levy** R1  
**Special Levy** R1

### 4-Bedroom Home with Double Garage in Thornbrook Place Golf Estate!

Double-Storey 4-Bedroom Home in Thornbrook Golf Estate

Enjoy secure estate living with the beauty of nature right at your doorstep. Located in the popular Thornbrook Golf Estate, this spacious family home offers 24-hour security, an 18-hole golf course, and resident wildlife including springboks and nyala – perfect for those who value peace, privacy, and a unique lifestyle.

Property Features:

4 spacious bedrooms – main bedroom downstairs with en-suite bathroom

Open-plan dining and living area

Modern kitchen with ample cupboard space

Large pajama lounge upstairs with bathroom

Braai area for easy entertaining

Outside Features:

Private yard

Double garage plus 2 additional parking spaces

This property combines the best of secure estate living with generous space and a natural setting – a wonderful home for families or anyone...

### Features

#### Interior

Bedrooms 4  
Bathrooms 2  
Kitchens 1  
Recep. Rooms 2  
Furnished No

#### Exterior

Garages 2  
Carports / Parkings 2  
Security Yes  
Pool No  
Views False

#### Sizes

Floor Size 190m<sup>2</sup>  
Land Size 10,845m<sup>2</sup>

