



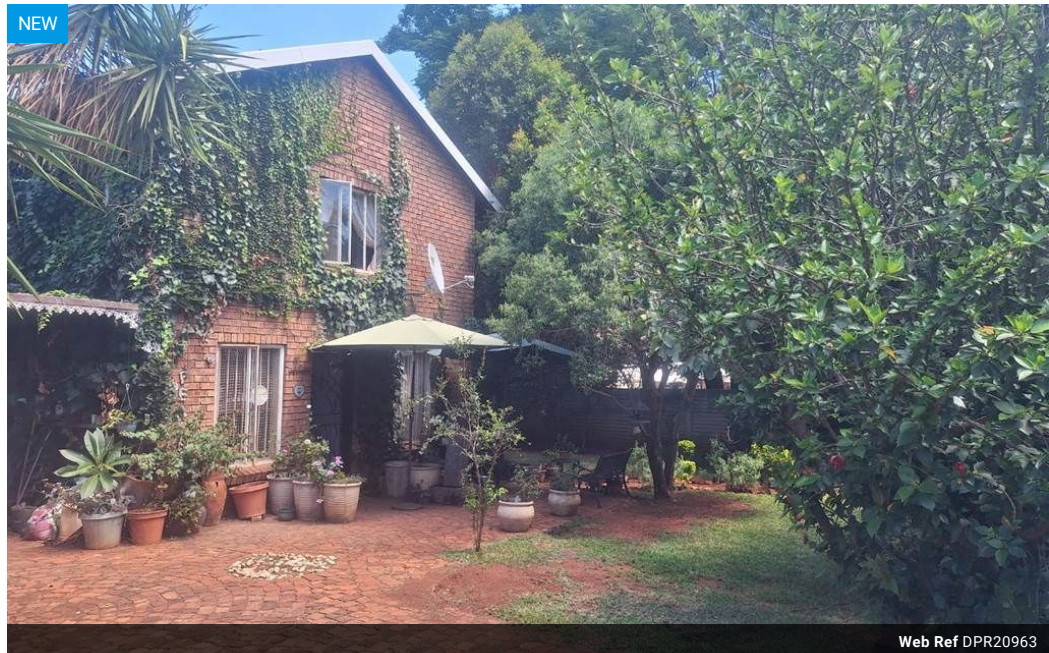
Caroline De Beer
082 414 3963
carolinedebeer@dpg.co.za

Contact Head Office - Dormehl
Lite

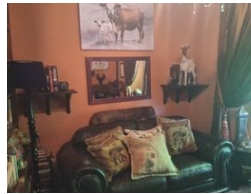
012 0000000

1170 Moulton Avenue
Waverley
0184

3 Bedroom House For Sale in Theresapark



Web Ref DPR20963



R880,000

3 Bedrooms 1 Bathrooms

Monthly Bond Repayment R8,785.74

Calculated over 20 years at 10.5% with no deposit.

Transfer Costs R28,334.00 **Bond Costs** R21,450.00

These calculations are only a guide. Please ask your conveyancer for exact calculations.

Monthly Levy R450 **Monthly Rates** R530 **Special Levy** R1

Up for Grabs

Secure 3-Bedroom Home with Modern Comforts

Ideal for first-time buyers, small families, or investors looking for a practical and secure property in a sought-after area.

Property Features:

3 Bedrooms with built-in cupboards

2 Bathrooms

Lounge

Kitchen

Covered parking for 1 vehicle

Pet-friendly garden

Features

Pets Allowed		Yes	
Interior		Exterior	
Bedrooms	3	Carports / Parkings	1
Bathrooms	1	Security	No
Kitchens	1	Pool	No
Recep. Rooms	1	Views	False
Furnished	No		
Sizes			
Floor Size	1m ²		
Land Size	431m ²		

