



Leigh Phillips
079 468 3425
leighp@dpg.co.za

Contact Platinum Rentals

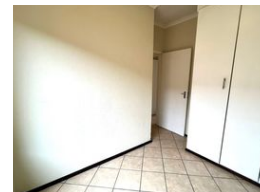
010 0250118

95 Victoria Street
Oakdene
Johannesburg South
2190



SOLE MANDATE

Web Ref DPR15998



R580,000

2 1

Monthly Bond Repayment R5,888.33

Calculated over 20 years at 10.75% with no deposit.

Transfer Costs R21,217.00 **Bond Costs** R15,795.00

These calculations are only a guide. Please ask your conveyancer for exact calculations.

Monthly Levy R400 **Monthly Rates** R570

Great investment opportunity

This upstairs unit is ideal as a starter investment.

2 bedrooms, 1 bathroom and open plan living area with granite topped kitchen.

Very secure estate

1 Under cover parking and 1 open parking

pre paid electricity

24 hour access control

Communal braai area

Close to all amenities

Features

Interior

Bedrooms	2
Bathrooms	1
Kitchens	1
Recep. Rooms	1
Furnished	No

Exterior

Carports / Parkings	2
Security	Yes
Pool	No
Views	False

Sizes

Floor Size	49m²
------------	------

