

3 Bedroom Townhouse For Sale in Amberfield Valley



Audette Holtzhausen
082 054 2930
audetteholtzhausen@dpg.co.za

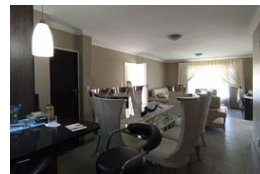
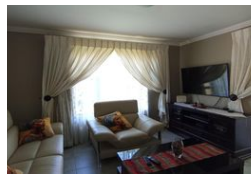
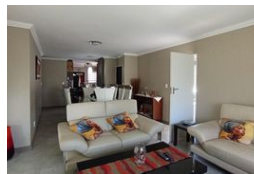
Contact Pretoria Moot

012 3323677

1170 Moulton Ave
Waverley
Pretoria
0186



Web Ref DPR17646



R1,800,000

3 Bedrooms 2 Bathrooms 1 Garage

Monthly Bond Repayment R17,970.84

Calculated over 20 years at 10.5% with no deposit.

Transfer Costs R61,141.00 **Bond Costs** R30,875.00

These calculations are only a guide. Please ask your conveyancer for exact calculations.

Monthly Levy R2,600 **Monthly Rates** R1,600

Spacious and Stylish Family Home in Amberfield Valley

Nestled in the highly sought-after area of Amberfield Valley, this immaculate family home offers a harmonious blend of comfort and convenience. With a spacious design and modern features, the property is ideal for families seeking a tranquil yet connected lifestyle.

The home boasts a solar geyser, providing energy efficiency and reducing electricity costs. A well-established garden in pristine condition complements the outdoor covered patio, seamlessly connecting the living area to a serene space perfect for relaxation or entertaining. The property is equipped with 5G Wi-Fi, prepaid electricity, and is located in a secure estate with parks and play areas, catering to families with children and fitness enthusiasts alike.

Amberfield College, offering both primary and high school education, is within walking distance, while...

Features

Pets Allowed		Yes			
Interior				Exterior	
Bedrooms	3			Garages	1
Bathrooms	2			Carports / Parkings	1
Kitchens	1			Security	No
Recep. Rooms	2			Pool	No
Furnished	No			Views	False
				Sizes	
				Floor Size	145m ²

