

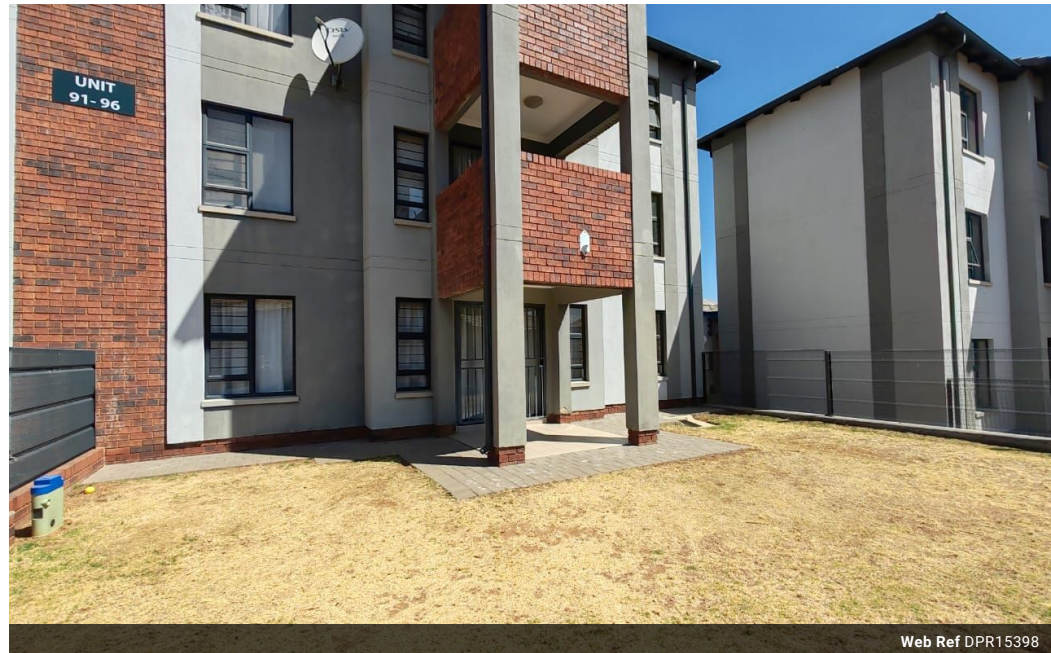


**Audette Holtzhausen**  
082 054 2930  
audetteholtzhausen@dpg.co.za

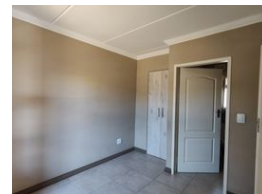
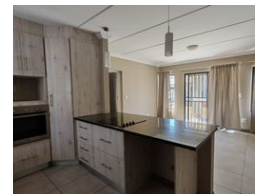
Contact Pretoria Moot

012 3323677

1170 Moulton Ave  
Waverley  
Pretoria  
0186



Web Ref DPR15398



## R999,999

🛏 2 🚿 2 🚗 1

**Monthly Bond Repayment** R9,983.79

Calculated over 20 years at 10.5% with no deposit.

**Transfer Costs** R30,502.00 **Bond Costs** R23,335.00

These calculations are only a guide. Please ask your conveyancer for exact calculations.

**Monthly Levy** R2,046.4 **Monthly Rates** R677.8

### Perfect Starter Home in Centurion!

Unlock the door to your first home with this exceptional sectional title property in the heart of Centurion, designed to offer the perfect blend of comfort, style, and convenience.

Ideal for first-time buyers or young families, this charming home boasts two spacious bedrooms, each with its own en-suite bathroom, ensuring privacy and ease of living. The welcoming living area flows seamlessly into an open patio, creating a cozy space for relaxing or entertaining guests.

The modern kitchen, equipped with everything you need, is perfect for those who enjoy cooking and hosting. Plus, you'll love the resort-style community pool—a great spot to unwind after a long day.

With a carport and garage, your parking needs are fully covered. Located in a highly sought-after area, you'll have quick access to all the essentials, including top...

### Features

Pets Allowed		Yes			
Interior		Exterior		Sizes	
Bedrooms	2	Garages	1	Floor Size	85m <sup>2</sup>
Bathrooms	2	Carports / Parkings	1		
Kitchens	1	Security	Yes		
Recep. Rooms	1	Pool	Yes		
Furnished	No	Views	False		

