

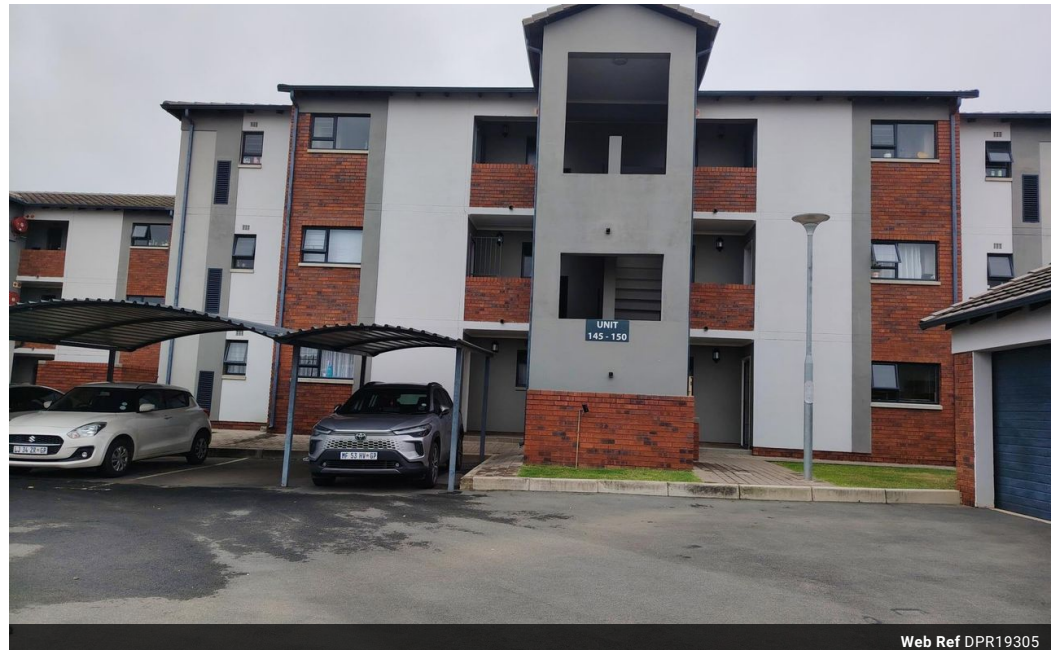


Audette Holtzhausen
082 054 2930
audetteholtzhausen@dpg.co.za

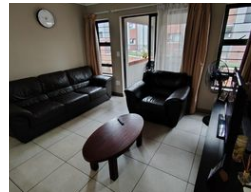
Contact Pretoria Moot

012 3323677

1170 Moulton Ave
Waverley
Pretoria
0186



Web Ref DPR19305



R945,000

2 2

Monthly Bond Repayment R9,434.69

Calculated over 20 years at 10.5% with no deposit.

Transfer Costs R30,502.00 **Bond Costs** R23,335.00

These calculations are only a guide. Please ask your conveyancer for exact calculations.

Monthly Levy R1,640 **Monthly Rates** R530

Modern Two-Bedroom Apartment in Secure Amberfield City Estate

Step into contemporary comfort with this stylish two-bedroom apartment, ideally situated in the sought-after Amberfield City. Perfect for young professionals or first-time buyers, this thoughtfully designed unit offers a seamless blend of modern living and practical convenience.

Both bedrooms are generously sized and feature their own en-suite bathrooms, ensuring privacy and comfort. The sleek open-plan kitchen is equipped with high-end finishes, ample cupboard space, a pantry, and a glass top stove with hob. It also accommodates a fridge and two under-counter appliances, catering to all your culinary needs.

The spacious living area flows effortlessly onto an undercover balcony through sliding glass doors—ideal for unwinding or entertaining guests.

Top-Notch Security & Lifestyle Amenities
Enjoy peace of mind with 24-hour...

Features

Interior		Exterior		Sizes	
Bedrooms	2	Carports / Parkings	2	Floor Size	67m ²
Bathrooms	2	Security	No		
Kitchens	1	Pool	No		
Recep. Rooms	2	Views	False		
Furnished	No				

