

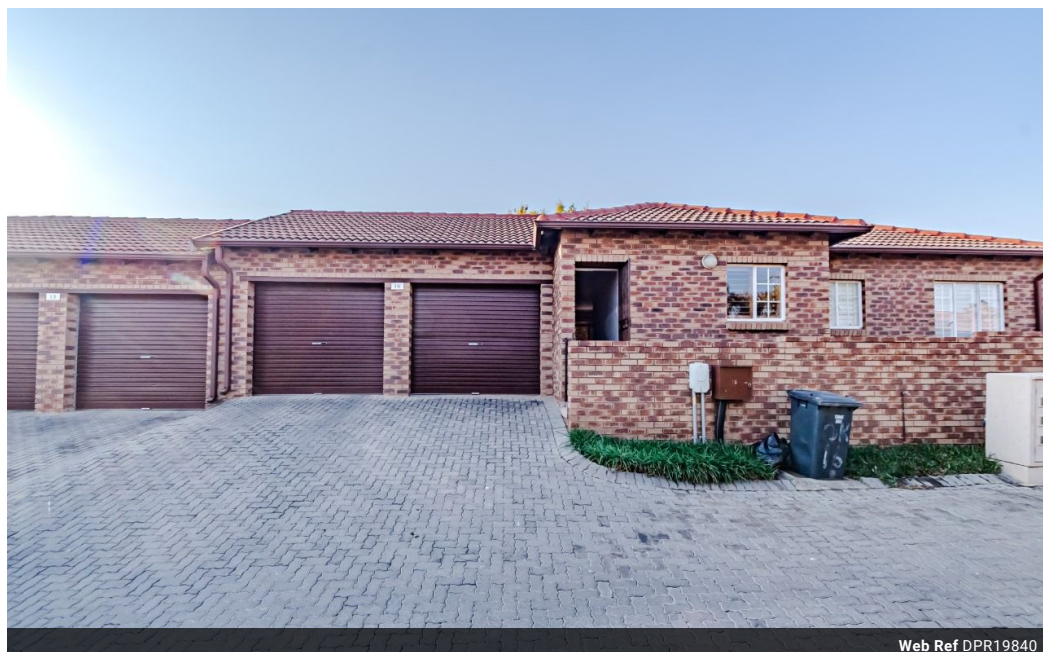


**Audette Holtzhausen**  
082 054 2930  
audetteholtzhausen@dpg.co.za

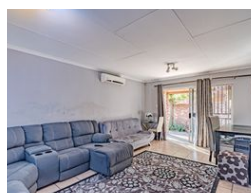
Contact Pretoria Moot

012 3323677

1170 Moulton Ave  
Waverley  
Pretoria  
0186



Web Ref DPR19840



**R1,300,000**

🛏 2 🚿 2 🏠 2

**Monthly Bond Repayment** R13,197.98

Calculated over 20 years at 10.75% with no deposit.

**Transfer Costs** R37,617.00 **Bond Costs** R27,105.00

These calculations are only a guide. Please ask your conveyancer for exact calculations.

**Monthly Levy** R2,636 **Monthly Rates** R915

## Tranquil Modern Living in the Heart of Amberfield

Nestled in one of Amberfield's sought-after complexes, this charming two-bedroom, two-bathroom home offers the perfect blend of comfort, space, and functionality—ideal for first-time buyers, small families, or those seeking a low-maintenance lifestyle without compromise.

From the moment you arrive, the double automated garage welcomes you with its generous proportions, offering not only secure parking but additional space ideal for a chest freezer or extra storage. Stepping inside, the garage flows seamlessly into the open-plan dining area and spacious TV lounge—an inviting heart of the home where natural light and warmth combine to create a relaxed, welcoming atmosphere.

The well-appointed kitchen is thoughtfully designed for everyday living and effortless entertaining. Featuring Rustenburg granite countertops, ample...

## Features

Interior		Exterior		Sizes	
Bedrooms	2	Garages	2	Floor Size	122m <sup>2</sup>
Bathrooms	2	Carports / Parkings	2	Land Size	295m <sup>2</sup>
Kitchens	12	Security	No		
Recep. Rooms	2	Pool	No		
Furnished	No	Views	False		

