



Audette Holtzhausen
082 054 2930
audetteholtzhausen@dpg.co.za

Contact Pretoria Moot

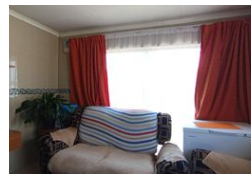
012 3323677

1170 Moulton Ave
Waverley
Pretoria
0186

NEW



Web Ref DPR20958



R900,000

3 2

Monthly Bond Repayment R8,985.42

Calculated over 20 years at 10.5% with no deposit.

Transfer Costs R28,334.00 **Bond Costs** R21,450.00

These calculations are only a guide. Please ask your conveyancer for exact calculations.

Charming Family Home in Prime Olievenhoutbosch Location

This inviting 3-bedroom home in Olievenhoutbosch offers comfort, convenience, and a functional layout for modern family living. All bedrooms feature built-in cupboards, while the kitchen is equipped with ample storage for everyday needs.

Enjoy cozy family time in the TV room, or make use of the versatile wendy house for extra storage. The property also includes a bathroom, a separate toilet, and secure double carports.

Perfectly positioned with easy access to major routes including the R55, N14, and N1, it's close to schools, shopping centers, medical facilities, and public transport—making daily life effortless.

An excellent opportunity for first-time buyers or growing families seeking convenience and value in Olievenhoutbosch.

Features

Interior

Bedrooms	3
Bathrooms	2
Kitchens	1
Recep. Rooms	1
Furnished	No

Exterior

Carports / Parkings	2
Security	No
Pool	No
Views	False

