



Audette Holtzhausen
082 054 2930
audetteholtzhausen@dpg.co.za

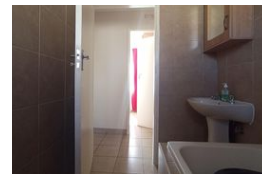
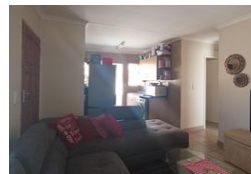
Contact Pretoria Moot

012 3323677

1170 Moulton Ave
Waverley
Pretoria
0186



Web Ref DPR18122



R1,050,000

3 Bedrooms 2 Bathrooms 1 Garage

Monthly Bond Repayment R10,659.90

Calculated over 20 years at 10.75% with no deposit.

Transfer Costs R32,749.00 **Bond Costs** R25,220.00

These calculations are only a guide. Please ask your conveyancer for exact calculations.

Monthly Levy R720 **Monthly Rates** R1,200

Your Ideal Three-Bedroom Home Awaits

Step into comfort and convenience with this charming three-bedroom home, thoughtfully designed for modern living. Each bedroom features built-in wardrobes, ensuring ample storage space for a clutter-free lifestyle.

The master suite is a private retreat, complete with its own en-suite bathroom featuring a shower, toilet, and basin. A second, well-appointed bathroom with a bathtub serves the rest of the household, offering both practicality and relaxation.

At the heart of the home, the kitchen boasts generous cupboard space, making meal preparation effortless. The spacious lounge area provides the perfect setting for family time and entertaining guests.

Additional features include a secure garage with an extra parking space, as well as stylish tiled flooring throughout, combining aesthetic appeal with easy maintenance.

This...

Features

Interior

Bedrooms	3
Bathrooms	2
Kitchens	1
Recep. Rooms	1
Furnished	No

Exterior

Garages	1
Carports / Parkings	1
Security	No
Pool	No
Views	False

Sizes

Land Size	305m ²
-----------	-------------------

