



**Audette Holtzhausen**  
082 054 2930  
audetteholtzhausen@dpg.co.za

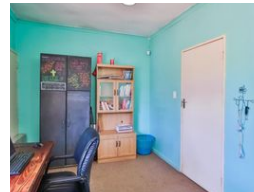
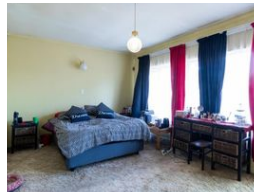
Contact Pretoria Moot

012 3323677

1170 Moulton Ave  
Waverley  
Pretoria  
0186



Web Ref DPR16976



**R2,112,750**

🛏 7 🚿 4 🏠 4

**Monthly Bond Repayment** R21,449.25

Calculated over 20 years at 10.75% with no deposit.

**Transfer Costs** R84,712.00

**Bond Costs** R34,625.00

These calculations are only a guide. Please ask your conveyancer for exact calculations.

**Monthly Rates** R1,260

## Investment Goldmine: Triple-Home Property

This extraordinary property offers an unparalleled opportunity for families and investors alike, sitting on a vast 1489 square metre stand with space to spare for expansion or future developments. Whether you envision adding more homes, establishing a business, or creating a larger communal space, the potential here is limitless.

The main house is the heart of the property, featuring four generously sized bedrooms. A fifth room, currently a versatile space, can easily be transformed into a study or hobby room. The living areas are perfect for hosting gatherings, with a spacious lounge and a separate dining room that ensure comfort and convenience for both family and guests. The kitchen is thoughtfully designed, offering ample cupboard space and a built-in four-plate stove, making meal preparation a delight.

Adjacent to the...

## Features

**Pets Allowed** Yes

### Interior

Bedrooms	7
Bathrooms	4
Kitchens	2
Recep. Rooms	3
Studies	1
Furnished	No

### Exterior

Garages	4
Carports / Parkings	4
Security	No
Pool	Yes
Views	False

### Sizes

Floor Size	430m <sup>2</sup>
Land Size	1,489m <sup>2</sup>

