

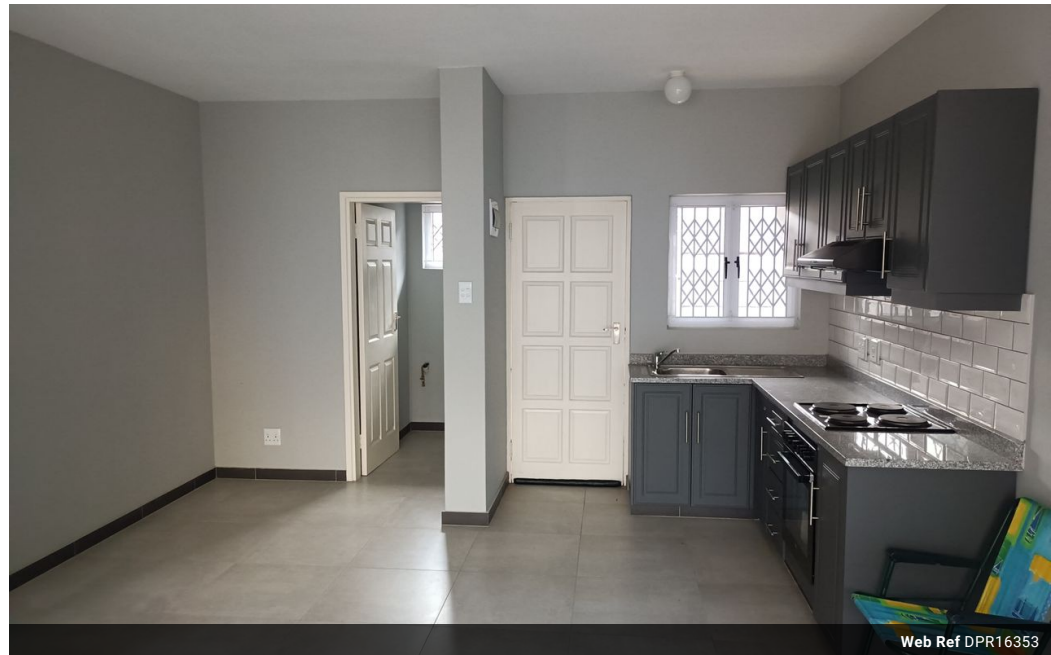


**Mervin Donnelly**  
061 696 8809  
mervin.d@dpg.co.za

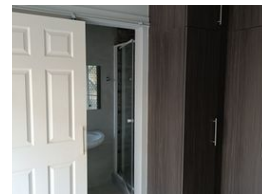
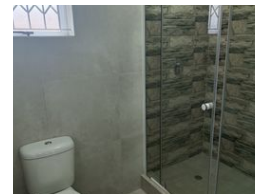
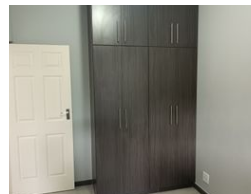
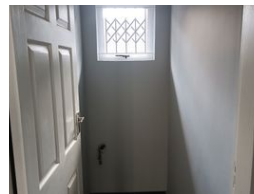
Contact Head Office - Dormehl  
Lite

012 0000000

1170 Moulton Avenue  
Waverley  
0184



Web Ref DPR16353



## R10,000,000

16 16

**Monthly Bond Repayment** R101,522.90

Calculated over 20 years at 10.75% with no deposit.

**Transfer Costs** R981,364.00 **Bond Costs** R84,785.00

These calculations are only a guide. Please ask your conveyancer for exact calculations.

Newly built block of flats for sale!!!

Dormehl Phalane proudly presents this newly built modern block of flats for sale off ridge road. The property consists of the following:

8 units  
all 2 bedroom units  
modern finishes  
16 parking bays

To view this property please contact Mervin Donnelly

## Features

### Interior

Bedrooms	16
Bathrooms	16
Kitchens	16
Recep. Rooms	16
Furnished	No

### Exterior

Carports / Parkings	16
Security	Yes
Pool	No
Views	False