

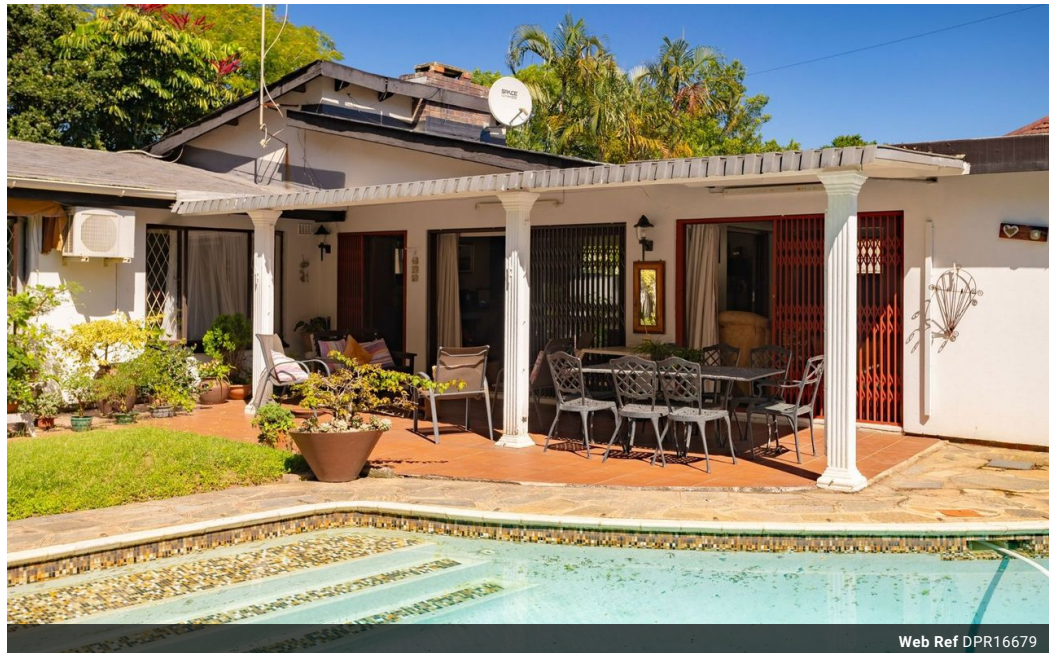


Christy Du Preez
082 300 8532
christydupreez@dpg.co.za

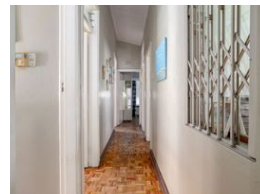
Contact Westville A-Team

031 2664343

1 Knightbridge,
16 Westville Road,
Westville



Web Ref DPR16679



R2,650,000

🛏️ 4 🚿 2 🏠 1

Monthly Bond Repayment R26,903.57

Calculated over 20 years at 10.75% with no deposit.

Transfer Costs R129,887.00 **Bond Costs** R40,300.00

These calculations are only a guide. Please ask your conveyancer for exact calculations.

Monthly Rates R2,771

Centrally Located Family Home

Welcome to this charming 4-bedroom house nestled in on Park Drive in Westville Central. Boasting a spacious and well-designed layout, this home offers comfortable living spaces and a host of desirable features. Upon entering the house, you are greeted by two lounges, both adorned with parquet floors. Lounge 1 and Lounge 2 open up seamlessly to the inviting pool area through sliding doors, providing a perfect blend of indoor and outdoor living. Lounge 2 extends further to an undercover patio, offering an ideal spot for relaxation and entertainment. All four bedrooms in the main house are adorned with classic parquet floors and feature ceiling fans and built-in cupboards. Two of the bedrooms are equipped with air conditioning for added comfort. The two bathrooms cater to different preferences, with one featuring a bath and the...

Features

Pets Allowed	Yes			
Interior		Exterior		Sizes
Bedrooms	4	Garages	1	Land Size
Bathrooms	2	Carports / Parkings	1	229m²
Kitchens	1	Security	Yes	
Recep. Rooms	2	Pool	Yes	
Furnished	No	Views	False	