



Jenny Grant
082 655 2117
jennygrant@dpg.co.za

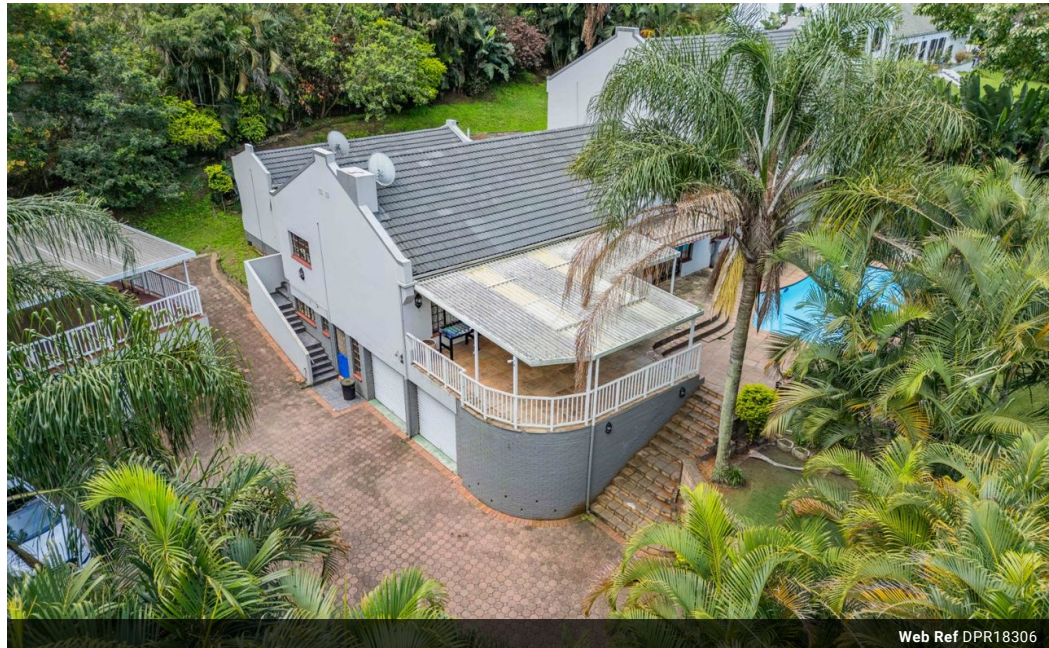


Sheri Minter
082 224 0400
sheriminter@dpg.co.za

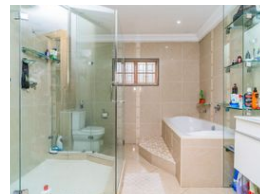
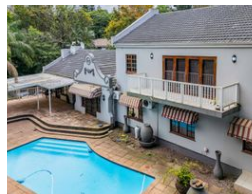
Contact Westville

031 2669091

Shop 1, Gordana Court,
22/26 Salisbury Avenue,
Westville



Web Ref DPR18306



R3,199,000

🛏 4 🚿 2 🚗 2

Monthly Bond Repayment R32,477.17

Calculated over 20 years at 10.75% with no deposit.

Transfer Costs R184,269.00 **Bond Costs** R44,070.00

These calculations are only a guide. Please ask your conveyancer for exact calculations.

Monthly Rates R2,800

WARM AND ELEGANT FAMILY HOME!

Discover an extraordinary lifestyle in this magnificent house.

Stepping into the sprawling reception area, be greeted by a brilliant layout that is both roomy and welcoming - the soul of this splendid 4 bedroom home. Two lounges, a formal and a TV lounge, offer relaxation and entertainment while the grand dining room echoes timeless elegance. The fitted Beech kitchen comes equipped with a gas stove, inviting the gourmet in you to dish out culinary delights.

The extensive main bedroom, perched upstairs, provides the embracing privacy you desire. Complimented by a functional office/study, an extravagant 'his and hers' walk-in closet, and an en-suite, this space adds a level of sophistication. The room further opens to two private balconies, affording breathtaking views of the front and back gardens.

A dream home for the hosts...

Features

Pets Allowed Yes

Interior

Bedrooms	4
Bathrooms	2
Kitchens	1
Recep. Rooms	3
Studies	1
Furnished	No

Exterior

Garages	2
Carports / Parkings	6
Security	Yes
Dom. Accom.	2
Pool	Yes
Views	True

Sizes

Floor Size	446m ²
Land Size	2,627m ²

