

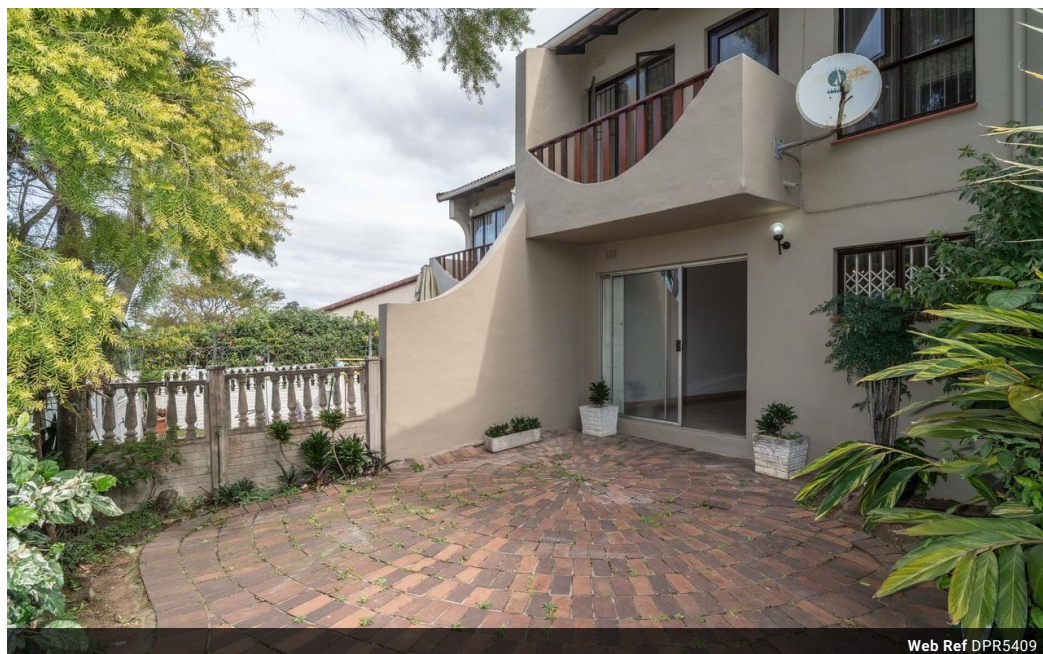


Anne Heyes
083 9635330
anneheyes@dpg.co.za

Contact Westville A-Team

031 2664343

1 Knightbridge,
16 Westville Road,
Westville



Web Ref DPR5409



R1,475,000

🛏 3 🚿 3 🚗 1

Monthly Bond Repayment R14,974.63

Calculated over 20 years at 10.75% with no deposit.

Transfer Costs R45,035.00 **Bond Costs** R28,990.00

These calculations are only a guide. Please ask your conveyancer for exact calculations.

Monthly Levy R2,838 **Monthly Rates** R1,322

charming 128 m2 double storey townhouse

This charming 128 m2 double storey townhouse is located in secure well run Willow west and is with very easy walking distance to Westwood Mall and offers easy access to the m13. On entering the unit, you are welcomed by a large light and bright open plan tiled lounge and dining room that leads out through sliding doors onto a private paved garden ideal for pets. The neat kitchen leads out onto a courtyard. A guest loo for convenience is neatly tucked away on this level. Up the stairs are three well sized bedrooms plus two bathrooms. The main bedroom boasts its own private balcony, an en suite bathroom with shower plus an inter leading dressing room. The second bathroom boasts a bath. The unit offers a garage plus a dedicated parking. There is plenty of visitors parking for family and friends.

Features

Pets Allowed		Yes			
Interior					
Bedrooms	3	Exterior			
Bathrooms	3	Garages	1	Sizes	
Kitchens	1	Carports / Parkings	1	Floor Size	128m²
Recep. Rooms	2	Security	Yes		
Furnished	No	Pool	No		
		Views	False		