



Lindi Honey
082 444 8996
lindhoney@dpg.co.za

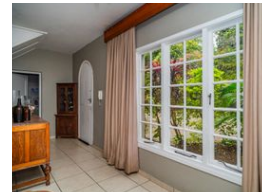
Contact Westville A-Team

031 2664343

1 Knightbridge,
16 Westville Road,
Westville



Web Ref DPR19298



R4,499,000

🛏 5 🚿 3 🚗 2

Monthly Bond Repayment R44,917.11

Calculated over 20 years at 10.5% with no deposit.

Transfer Costs R343,070.00

Bond Costs R57,265.00

These calculations are only a guide. Please ask your conveyancer for exact calculations.

Monthly Rates R3,980

Live like royalty in Kings Avenue!

Nestled in the heart of central Westville on prime, level land, this elegant double-story residence exudes timeless charm and exceptional potential. Perfect for a savvy investor or a large family, this well-loved property features a spacious 5-bedroom main house alongside 4 income-generating cottages, currently generating a monthly income of R28,500.

Features

Pets Allowed Yes

Interior

Bedrooms	5
Bathrooms	3
Kitchens	1
Recep. Rooms	3
Studies	1
Furnished	No

Exterior

Garages	2
Carports / Parkings	2
Security	Yes
Pool	No
Views	False

Sizes

Land Size	2,693m²
-----------	---------