



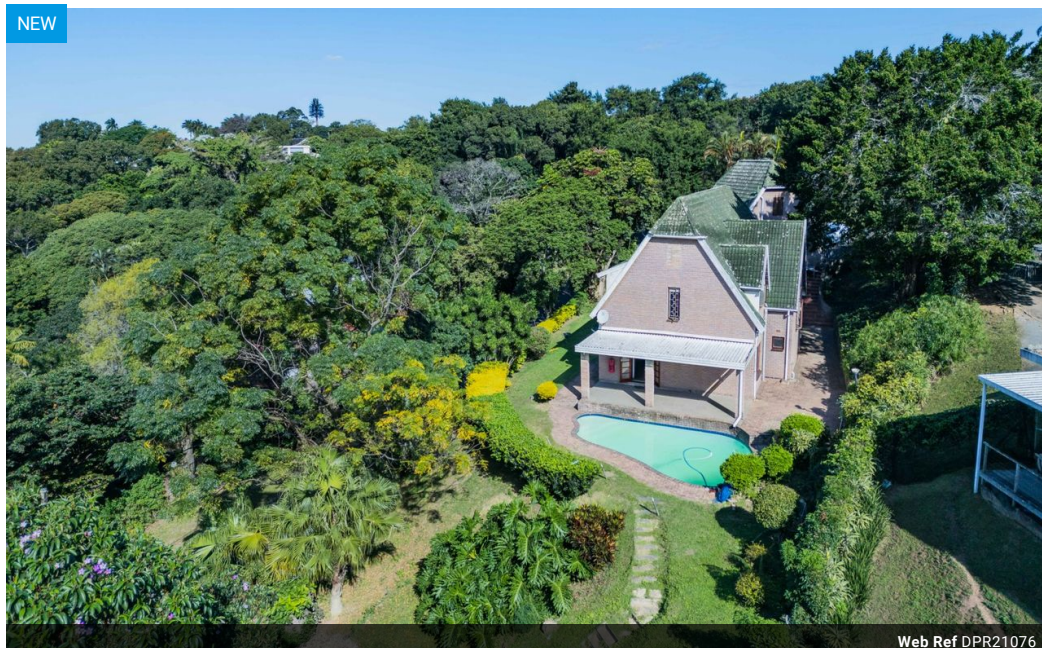
Lindi Honey
082 444 8996
lindhoney@dpg.co.za

Contact Westville A-Team

031 2664343

1 Knightbridge,
16 Westville Road,
Westville

NEW



Web Ref DPR21076



R2,850,000

4 2 2

Monthly Bond Repayment R28,453.83

Calculated over 20 years at 10.5% with no deposit.

Transfer Costs R148,196.00 **Bond Costs** R42,185.00

These calculations are only a guide. Please ask your conveyancer for exact calculations.

Luxury Family Home in Beverly Hills, Central Westville

This stunning double-story family home is situated in a secure, guarded road in the prestigious Beverly Hills neighborhood of Central Westville

Features

| | | | | | |
|---------------------|----|---------------------|-------|--------------|---------|
| Pets Allowed | | Yes | | | |
| Interior | | Exterior | | Sizes | |
| Bedrooms | 4 | Garages | 2 | Land Size | 1,542m² |
| Bathrooms | 2 | Carports / Parkings | 2 | | |
| Kitchens | 1 | Security | Yes | | |
| Recep. Rooms | 3 | Pool | Yes | | |
| Studies | 1 | Views | False | | |
| Furnished | No | | | | |