



Noleen Dunn
084 803 9972
noleendunn@dpg.co.za

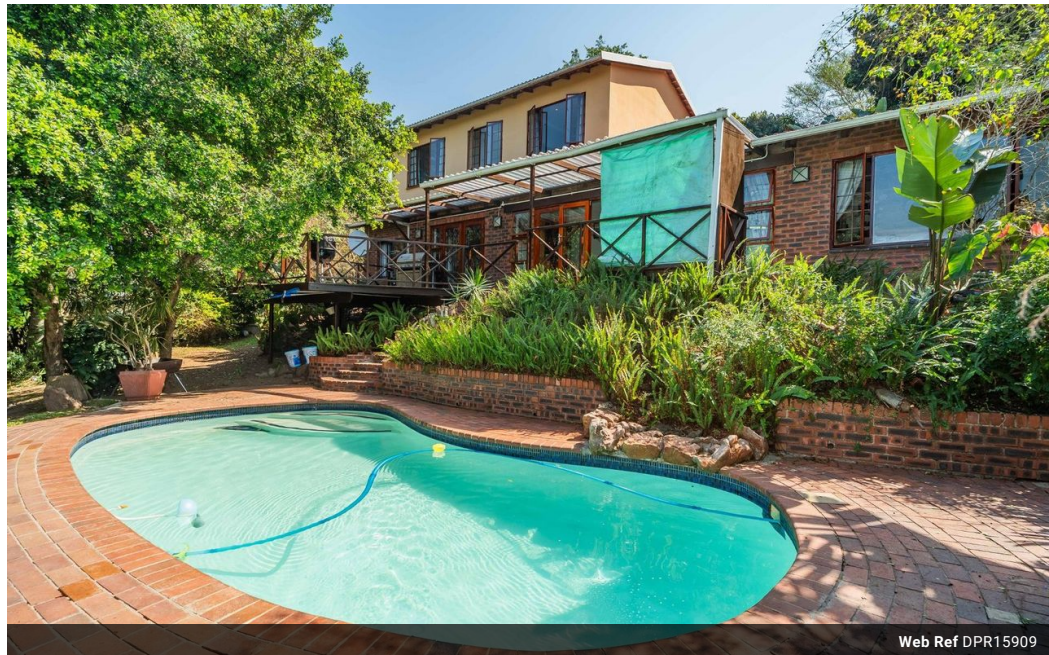


Nicci Arnott
071 887 0870
nicciarnott@dpg.co.za

Contact Westville

031 2669091

Shop 1, Gordana Court,
22/26 Salisbury Avenue,
Westville



Web Ref DPR15909



R2,350,000

5 5 2

Monthly Bond Repayment R23,857.88

Calculated over 20 years at 10.75% with no deposit.

Transfer Costs R101,552.00 **Bond Costs** R36,530.00

These calculations are only a guide. Please ask your conveyancer for exact calculations.

Monthly Rates R2,200

WARM AND ELEGANT FAMILY HOME!

Exquisite family home in a highly sought-after location, conveniently close to Westville's top schools, shopping centers, sports clubs, and easily accessible highways.

This remarkable property poised in a pan-handle position, offers the perfect blend of privacy and natural beauty. As you step inside, you are welcomed by natural light, high ceilings and a seamless flow that enhances the home's inviting atmosphere. The heart of the home features an open-plan kitchen, equipped with ample cupboard space, a gas hob & electric oven, along with a countertop ideal for a cozy breakfast nook. The kitchen effortlessly transitions into a sunken TV lounge & adjacent is a dining space that boasts large stacker doors that open onto an expansive undercover deck, offering views of the lush garden and a swimming pool area—a true entertainer's...

Features

Pets Allowed		Yes		
Interior		Exterior		Sizes
Bedrooms	5	Garages	2	Floor Size
Bathrooms	5	Carports / Parkings	4	Land Size
Kitchens	1	Security	Yes	
Recep. Rooms	3	Pool	Yes	
Studies	1	Views	True	
Furnished	No			

