



**Christy Du Preez**  
082 300 8532  
christydupreez@dpg.co.za

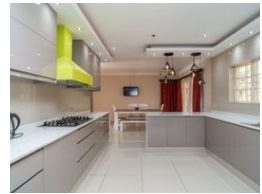
Contact Westville A-Team

031 2664343

1 Knightbridge,  
16 Westville Road,  
Westville



Web Ref DPR6178



**R3,250,000**

4 3 2

**Monthly Bond Repayment** R32,447.35

Calculated over 20 years at 10.5% with no deposit.

**Transfer Costs** R192,188.00 **Bond Costs** R45,955.00

These calculations are only a guide. Please ask your conveyancer for exact calculations.

**Monthly Rates** R2,000

## OWNER RELOCATING | ALL REASONABLE OFFERS ACCEPTED DESCRIPTION

Comfort, class & tranquility are some of the many features 26 Queen Elizabeth Drive has. Double storey home offering spectacular views from this above road level home. Recently refurbished with quality finishes and tasteful decor throughout.

3 refurbished bathrooms and 2 lounges. The modern gourmet kitchen is open plan. The home has a fifth bedroom or guest suite off the kitchen.

A stone's throw from Cygnet School and walking distance into central schools. High beams and well-maintained home allows you to move in and enjoy the many features of this proud home.

This gem is worth viewing.

## Features

**Pets Allowed** Yes

### Interior

Bedrooms	4
Bathrooms	3
Kitchens	1
Recep. Rooms	3
Studies	1
Furnished	No

### Exterior

Garages	2
Carports / Parkings	2
Security	Yes
Dom. Accom.	1
Pool	Yes
Views	False

### Sizes

Land Size	2,174m²
-----------	---------