

Noleen Dunn
084 803 9972
noleendunn@dpg.co.za



Nicci Arnott
071 887 0870
nicciarnott@dpg.co.za

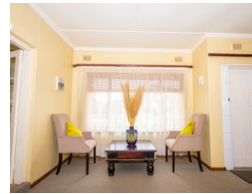
Contact Westville

031 2669091

Shop 1, Gordana Court,
22/26 Salisbury Avenue,
Westville



Web Ref DPR14541



R2,790,000

4 2 3

Monthly Bond Repayment R27,854.80

Calculated over 20 years at 10.5% with no deposit.

Transfer Costs R141,228.00 **Bond Costs** R40,300.00

These calculations are only a guide. Please ask your conveyancer for exact calculations.

Monthly Rates R2,500

SOUGHT AFTER DAWNCLIFFE ADDRESS

This well loved home offers 4 beds, 2 baths and 2 lounges. The separate granny cottage has 2 bedrooms, very spacious lounge, dining room and open plan kitchen. The flat offers lots of cupboard space and is ideal for the extended family.

There is a pool and lovely child friendly garden.

This home is situated in a sought after address in Westville and is zoned for all the central schools.

Features

Pets Allowed Yes

Interior

Bedrooms	4
Bathrooms	2
Kitchens	1
Recep. Rooms	3
Furnished	No

Exterior

Garages	3
Carports / Parkings	6
Security	Yes
Dom. Accom.	1
Pool	Yes
Views	True

Sizes

Land Size	2,546m²
-----------	---------

