



Noleen Dunn
084 803 9972
noleendunn@dpg.co.za

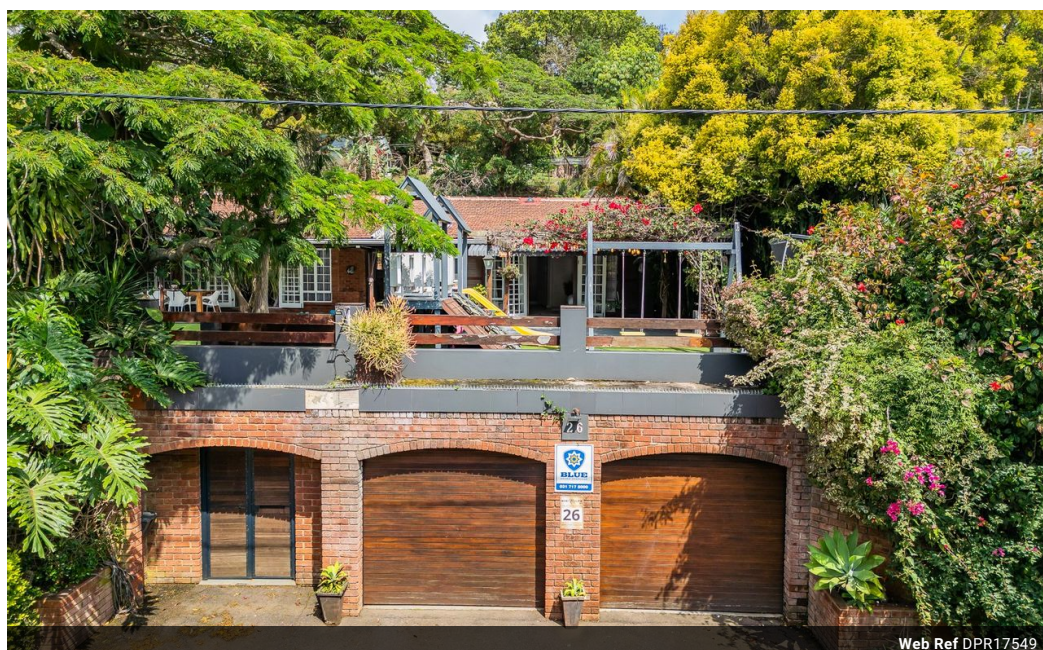


Nicci Arnott
071 887 0870
nicciarnott@dpg.co.za

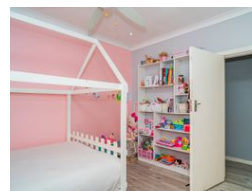
Contact Westville

031 2669091

Shop 1, Gordana Court,
22/26 Salisbury Avenue,
Westville



Web Ref DPR17549



R2,795,000

3 2 4

Monthly Bond Repayment R28,375.65

Calculated over 20 years at 10.75% with no deposit.

Transfer Costs R141,487.00 **Bond Costs** R40,300.00

These calculations are only a guide. Please ask your conveyancer for exact calculations.

Monthly Rates R2,481

NEW YORK KIND OF FEELING

Experience the charm and elegance of this one-of-a-kind property in Dawncliffe, reminiscent of a New York City brownstone but nestled in the heart of Westville. Set on a magnificent piece of land, this home is truly an entertainer's dream.

Featuring a sparkling pool, an expansive entertainment area, and a jungle gym with swings for the kids, the outdoor space offers endless fun for the whole family. Picture yourself hosting gatherings under twinkling fairy lights that add magic to the garden's atmosphere, or relaxing in the main bedroom that opens directly onto the entertainment area—perfect for seamless indoor-outdoor living.

Inside, the home offers three generous bedrooms and two modern bathrooms, with the main bedroom boasting an en suite. The spacious lounge and dining area are perfect for family time or hosting guests,...

Features

Pets Allowed		Yes			
Interior		Exterior		Sizes	
Bedrooms	3	Garages	4	Floor Size	341m²
Bathrooms	2	Carports / Parkings	4	Land Size	1,500m²
Kitchens	1	Security	Yes		
Recep. Rooms	2	Pool	Yes		
Studies	1	Views	True		
Furnished	No				

