



**Anne Heyes**  
083 9635330  
anneheyes@dpg.co.za

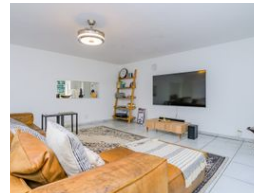
Contact Westville A-Team

031 2664343

1 Knightbridge,  
16 Westville Road,  
Westville



Web Ref DPR20036



**R1,850,000**

3 Bedrooms 2 Bathrooms 1 Carport

**Monthly Bond Repayment** R18,470.03

Calculated over 20 years at 10.5% with no deposit.

**Transfer Costs** R66,308.00 **Bond Costs** R32,760.00

These calculations are only a guide. Please ask your conveyancer for exact calculations.

**Monthly Rates** R1,500

Three bedroom Townhouse with income generating flat

Ideally locate in a central position of Westville, this charming residence offers convenience with nearby schools, shopping centers, and easy access to major highways.

## Features

**Pets Allowed** Yes

### Interior

Bedrooms	3
Bathrooms	2
Kitchens	1
Recep. Rooms	2
Furnished	No

### Exterior

Garages	1
Carports / Parkings	3
Security	Yes
Pool	No
Views	False

### Sizes

Floor Size	192m²
------------	-------