



Jenny Grant
082 655 2117
jennygrant@dpg.co.za

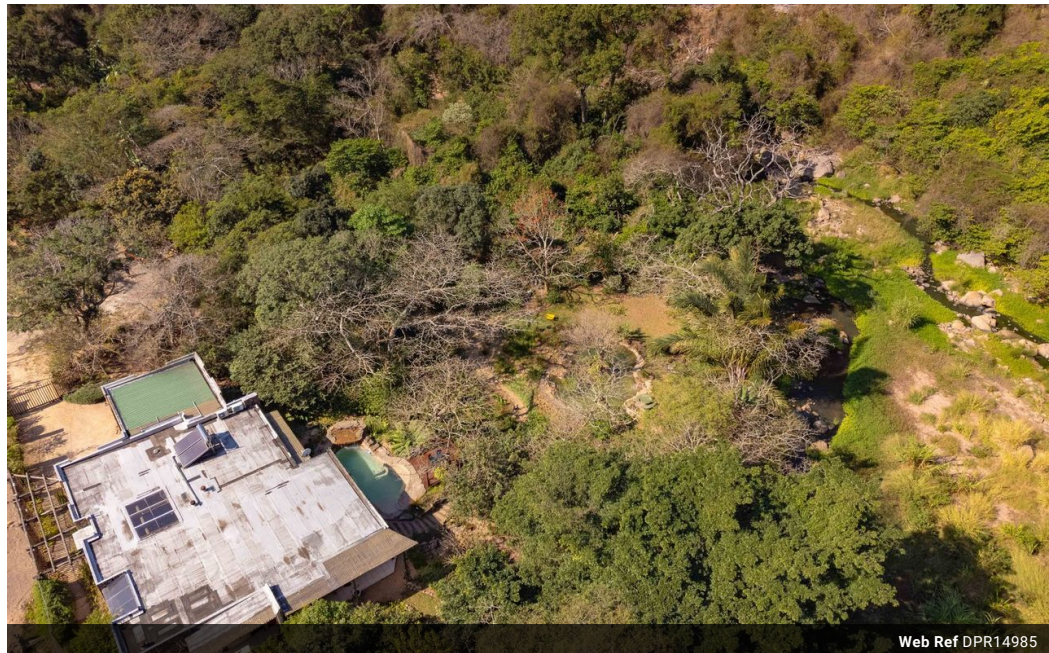


Sheri Minter
082 224 0400
sheriminter@dpg.co.za

Contact Westville

031 2669091

Shop 1, Gordana Court,
22/26 Salisbury Avenue,
Westville



Web Ref DPR14985



R3,250,000

3 3 2

Monthly Bond Repayment R32,994.94

Calculated over 20 years at 10.75% with no deposit.

Transfer Costs R192,047.00 **Bond Costs** R45,955.00

These calculations are only a guide. Please ask your conveyancer for exact calculations.

Monthly Rates R1,700

NATURE LOVERS PARADISE

Unique home designed and built 19 years ago by architect, Dave James. This nature lovers' paradise offers immense peace and tranquillity. Situated in a quiet cul-de-sac, nestled in a landscaped manicured indigenous garden with the Palmiet River and nature reserve on the boundary, the garden has a pond and a heated rock-pool with a waterfall feature and has been voted the best indigenous garden for 4 years in a row.

The home offers 3 spacious, well fitted bedrooms all with immaculate stylish bathrooms, 2 of the bedrooms have sliding doors leading to the garden. There is also a study with 2 fitted desks ideal for working from home, and an area for a home gym with external shower. The separate laundry has built-in cupboards, direct access into a large size double garage with an extra high ceiling and door with a mezzanine...

Features

Pets Allowed Yes

Interior

Bedrooms	3
Bathrooms	3
Kitchens	1
Recep. Rooms	2
Studies	1
Furnished	No

Exterior

Garages	2
Carports / Parkings	3
Security	Yes
Pool	Yes
Views	True

Sizes

Floor Size	315m ²
Land Size	3,318m ²

