

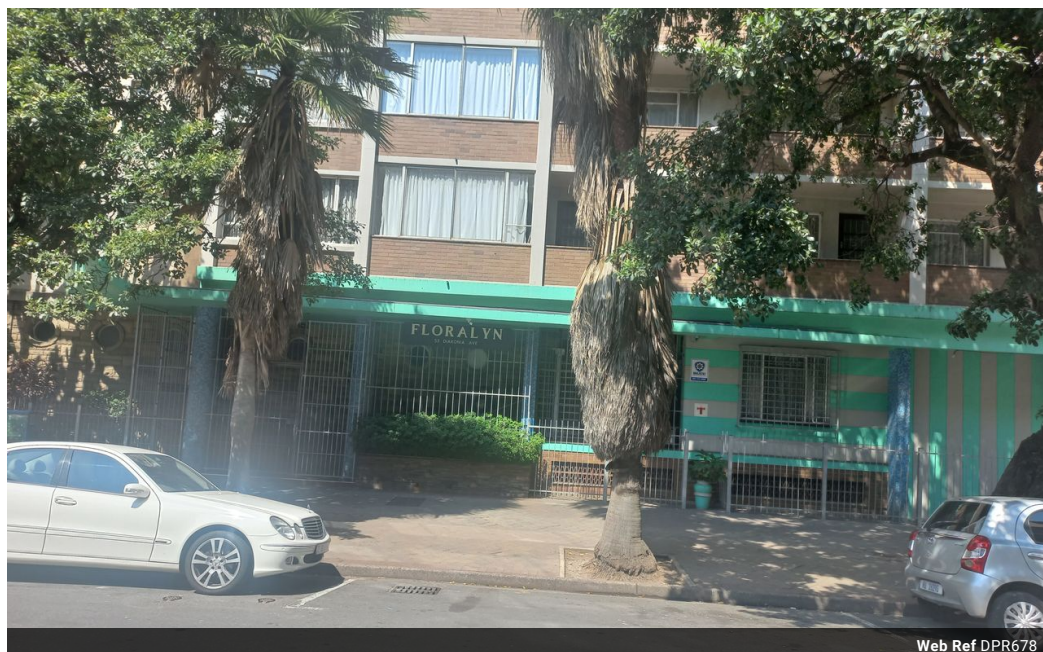


Mervin Donnelly
061 696 8809
mervin.d@dpg.co.za

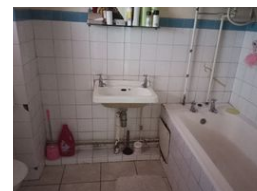
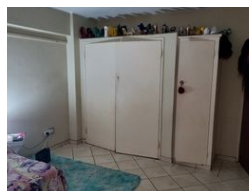
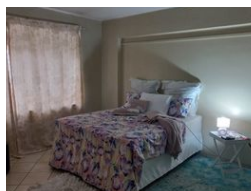
Contact Head Office - Dormehl
Lite

012 0000000

1170 Moulton Avenue
Waverley
0184



Web Ref DPR678



R430,000

🛏 0.5 🚿 1

Monthly Bond Repayment R4,365.48

Calculated over 20 years at 10.75% with no deposit.

Transfer Costs R17,928.00 **Bond Costs** R12,935.00

These calculations are only a guide. Please ask your conveyancer for exact calculations.

Monthly Levy R1,200

Calling all first time buyers and investors!!!

Dormehl Phalane proudly presents this bachelor unit for sale close to Durban harbour.

To view this property contact Mervin Donnelly

Features

Interior

Bedrooms	0.5
Bathrooms	1
Kitchens	1
Recep. Rooms	1
Furnished	No

Exterior

Security	No
Pool	No
Views	False