

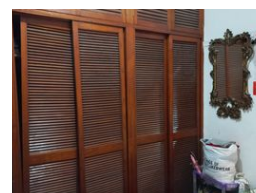
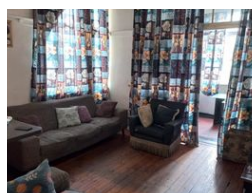


Mervin Donnelly
061 696 8809
mervin.d@dpg.co.za

Contact Head Office - Dormehl
Lite

012 0000000

1170 Moulton Avenue
Waverley
0184



R369,000

2 1

Monthly Bond Repayment R3,746.19

Calculated over 20 years at 10.75% with no deposit.

Transfer Costs R16,806.00 **Bond Costs** R11,960.00

These calculations are only a guide. Please ask your conveyancer for exact calculations.

Monthly Levy R2,200

2 bedroom apartment for sale on the Esplanade!!!

Dormehl Phalane proudly presents this 2 bedroom apartment for sale on the Esplanade. This property consists of:

Standard kitchen
spacious lounge
2 bedrooms
family size bathroom
no parking
shareblock

To view this property please contact Mervin Donnelly

Features

Interior

Bedrooms	2
Bathrooms	1
Kitchens	1
Recep. Rooms	1
Furnished	No

Exterior

Security	No
Pool	No
Views	False