



Mervin Donnelly
061 696 8809
mervin.d@dpg.co.za

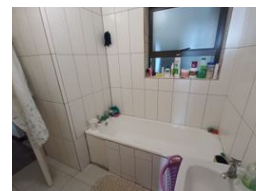
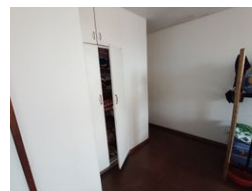
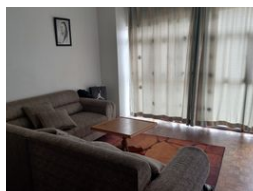
Contact Head Office - Dormehl
Lite

012 0000000

1170 Moulton Avenue
Waverley
0184



Web Ref DPR1296



R475,000

🛏 1 🚿 2

Monthly Bond Repayment R4,822.34

Calculated over 20 years at 10.75% with no deposit.

Transfer Costs R19,049.00 **Bond Costs** R13,910.00

These calculations are only a guide. Please ask your conveyancer for exact calculations.

Monthly Levy R1,300

Calling all first time buyers and investors!!!

Dormehl Phalane proudly presents this 1 bedroom apartment for sale on the Esplanade. This property consists of:

1 bedroom fully fitted
family bathroom
1 MES
spacious lounge
standard kitchen
no parking

To view this property contact Mervin Donnelly

Features

Interior

Bedrooms	1
Bathrooms	2
Kitchens	1
Recep. Rooms	1
Furnished	No

Exterior

Security	No
Pool	No
Views	False