

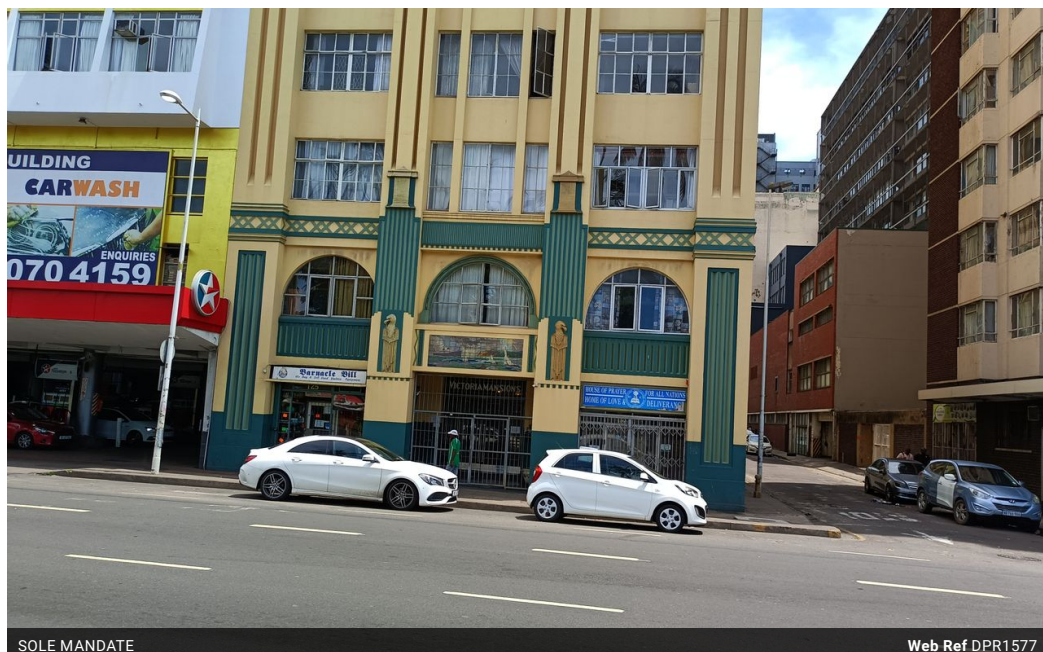


Mervin Donnelly
061 696 8809
mervin.d@dpg.co.za

Contact Head Office - Dormehl
Lite

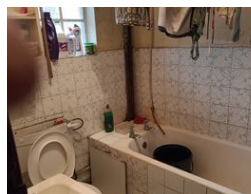
012 0000000

1170 Moulton Avenue
Waverley
0184



SOLE MANDATE

Web Ref DPR1577



R260,000

0.5 1

Monthly Bond Repayment R2,639.60

Calculated over 20 years at 10.75% with no deposit.

Transfer Costs R15,517.00 **Bond Costs** R10,985.00

These calculations are only a guide. Please ask your conveyancer for exact calculations.

Calling all first time buyers and investors!!!

Dormehl Phalane proudly presents this spacious bachelor for sale on the esplanade.

To view this property please contact Mervin Donnelly

Features

Interior

Bedrooms	0.5
Bathrooms	1
Kitchens	1
Recep. Rooms	1
Furnished	No

Exterior

Security	No
Pool	No
Views	False