



Mervin Donnelly
061 696 8809
mervin.d@dpg.co.za

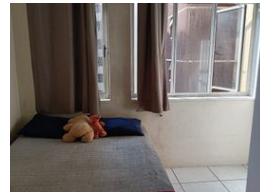
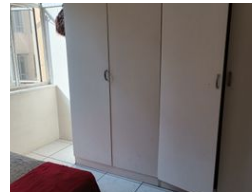
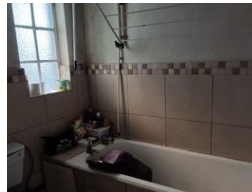
Contact Head Office - Dormehl
Lite

012 0000000

1170 Moulton Avenue
Waverley
0184



Web Ref DPR5028



R380,000

1.5 1

Monthly Bond Repayment R3,857.87

Calculated over 20 years at 10.75% with no deposit.

Transfer Costs R16,806.00 **Bond Costs** R11,960.00

These calculations are only a guide. Please ask your conveyancer for exact calculations.

Monthly Levy R2,400

Calling all first time buyers and investors!!!

Dormehl Phalane proudly presents this spacious 1.5 bedroom apartment on the Esplanade for sale. The property is close to all amenities. The property consists of the following:

- 1 spacious bedroom with bics
- family size bathroom
- open plan lounge
- tiled
- half bedroom can fit double bed
- standard kitchen
- harbour views
- no parking

To view this property contact Mervin Donnelly

Features

Interior

Bedrooms	1.5
Bathrooms	1
Kitchens	1
Recep. Rooms	1
Furnished	No

Exterior

Security	Yes
Pool	No
Views	True