

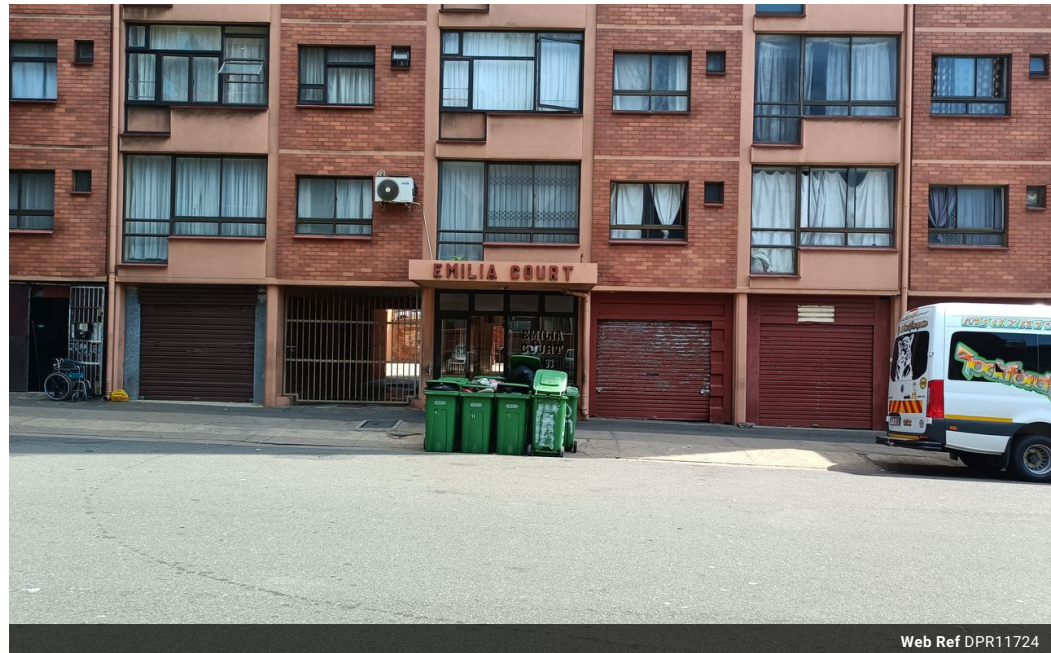


Mervin Donnelly
061 696 8809
mervin.d@dpg.co.za

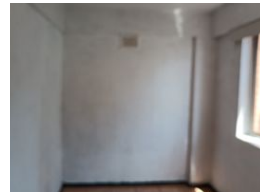
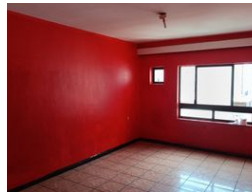
Contact Head Office - Dormehl
Lite

012 0000000

1170 Moulton Avenue
Waverley
0184



Web Ref DPR11724



R440,000

🛏 1 🛁 1

Monthly Bond Repayment R4,467.01

Calculated over 20 years at 10.75% with no deposit.

Transfer Costs R17,928.00 **Bond Costs** R12,935.00

These calculations are only a guide. Please ask your conveyancer for exact calculations.

Calling all first time buyers and investors!!!

Dormehl Phalane properties proudly presents this newly renovated 1 bedroom apartment for sale. The property consists of:

standard kitchen fitted
family bathroom
spacious lounge
fitted bedroom
walking distance from the beach
close to all amenities

To view this property please contact Mervin Donnelly

Features

Interior

Bedrooms	1
Bathrooms	1
Kitchens	1
Recep. Rooms	1
Furnished	No

Exterior

Carports / Parkings	1
Security	Yes
Pool	No
Views	False