



**Mervin Donnelly**  
061 696 8809  
mervin.d@dpg.co.za

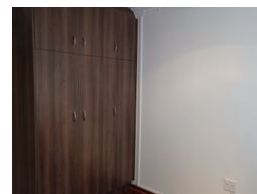
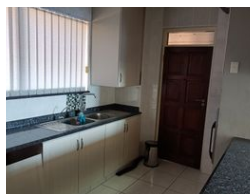
Contact Head Office - Dormehl  
Lite

012 0000000

1170 Moulton Avenue  
Waverley  
0184



Web Ref DPR11913



**R2,900,000**

3 2

**Monthly Bond Repayment** R28,953.02

Calculated over 20 years at 10.5% with no deposit.

**Transfer Costs** R152,196.00 **Bond Costs** R42,185.00

These calculations are only a guide. Please ask your conveyancer for exact calculations.

**Monthly Levy** R5,786

**Stunning frontline property for sale in North beach!!!**

Dormehl Phalane proudly presents this stunning 3 bedroom apartment for sale in North beach. The property consists of:

close to all amenities  
walking distance to the beach  
360 degree sea views  
1 MES  
1 family bathrooms  
3 spacious bedrooms fully fitted  
modern fitted kitchen  
spacious lounge  
1 undercover parking  
levies R5786

To view this property please contact Mervin Donnelly

## Features

### Interior

Bedrooms	3
Bathrooms	2
Kitchens	1
Recep. Rooms	1
Furnished	No

### Exterior

Carports / Parkings	1
Security	Yes
Pool	No
Views	True