



**Mervin Donnelly**  
061 696 8809  
mervin.d@dpg.co.za

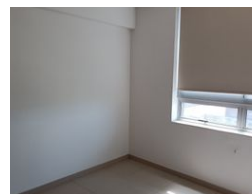
Contact Head Office - Dormehl  
Lite

012 0000000

1170 Moulton Avenue  
Waverley  
0184



Web Ref DPR11918



**R2,500,000**

2 1

**Monthly Bond Repayment** R25,380.72

Calculated over 20 years at 10.75% with no deposit.

**Transfer Costs** R115,720.00 **Bond Costs** R38,415.00

These calculations are only a guide. Please ask your conveyancer for exact calculations.

**Monthly Levy** R4,193

**Stunning beachfront apartment for sale!!!**

Dormehl Phalane proudly presents this stunning 2 bedroom apartment for sale in North beach. The property consists of:

360 degree sea views  
close to all amenities  
walking distance to the beach  
2 spacious bedrooms modern and fully fitted  
1 bathroom  
separate toilet  
1 undercover parking  
modern fully fitted kitchen

To view this property please contact Mervin Donnelly

## Features

### Interior

Bedrooms	2
Bathrooms	1
Kitchens	1
Recep. Rooms	1
Furnished	No

### Exterior

Carports / Parkings	1
Security	Yes
Pool	No
Views	True