



Mervin Donnelly
061 696 8809
mervin.d@dpg.co.za

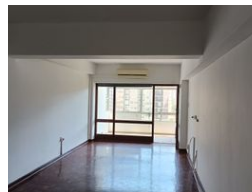
Contact Head Office - Dormehl
Lite

012 0000000

1170 Moulton Avenue
Waverley
0184



Web Ref DPR11920



R1,350,000

2 1

Monthly Bond Repayment R13,478.13

Calculated over 20 years at 10.5% with no deposit.

Transfer Costs R39,219.00 **Bond Costs** R27,105.00

These calculations are only a guide. Please ask your conveyancer for exact calculations.

Monthly Levy R2,897

Spacious apartment frontline apartment for sale in North beach!!!

Dormehl Phalane properties proudly presents this spacious apartment for sale in North Beach. The property consists of:

360 degree sea views
walking distance to the beach
close to all amenities
2 spacious bedroom fully fitted
fully fitted kitchen
family bathroom
seperate toilet
spacious lounge
no parking
levies R2897

To view this property please contact Mervin Donnelly

Features

Interior

Bedrooms	2
Bathrooms	1
Kitchens	1
Recep. Rooms	1
Furnished	No

Exterior

Security	Yes
Pool	No
Views	True