

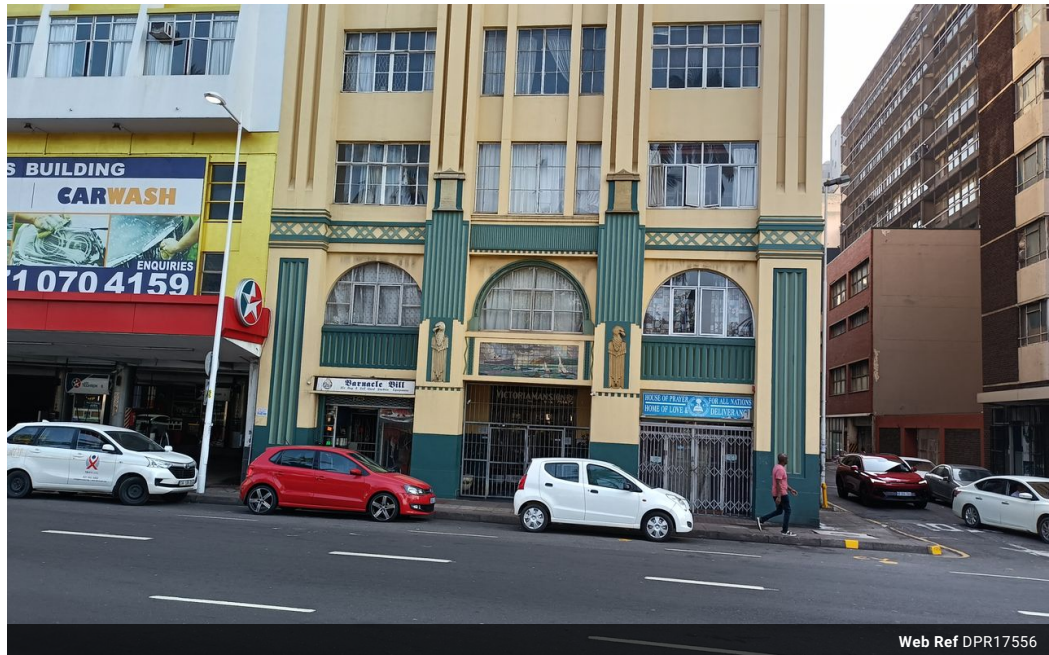


Mervin Donnelly
061 696 8809
mervin.d@dpg.co.za

Contact Head Office - Dormehl
Lite

012 0000000

1170 Moulton Avenue
Waverley
0184



Web Ref DPR17556



R320,000

Monthly Bond Repayment R3,248.73

Calculated over 20 years at 10.75% with no deposit.

Transfer Costs R16,346.00 **Bond Costs** R11,560.00

These calculations are only a guide. Please ask your conveyancer for exact calculations.



Calling all first time buyers and investors!!!

Dormehl Phalane proudly presents this shareblock apartment for sale on the Esplanade. The property consists of:

- close to all amenities
- harbour views
- standard kitchen
- spacious lounge
- enclosed balcony
- spacious fitted bedroom
- standard kitchen
- cash buyers only shareblock

To view this property please call Mervin Donnelly

Features

Interior

Bedrooms	1
Bathrooms	1
Kitchens	1
Recep. Rooms	1
Furnished	No

Exterior

Security	Yes
Pool	No
Views	True