

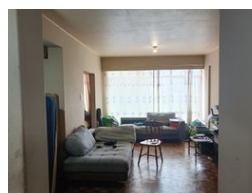


Mervin Donnelly
061 696 8809
mervin.d@dpg.co.za

Contact Head Office - Dormehl
Lite

012 0000000

1170 Moulton Avenue
Waverley
0184



R380,000

0.5 1

Monthly Bond Repayment R3,793.84

Calculated over 20 years at 10.5% with no deposit.

Transfer Costs R16,862.00 **Bond Costs** R11,960.00

These calculations are only a guide. Please ask your conveyancer for exact calculations.

Calling all first time buyers and investors!!!

Dormehl Phalane proudly presents this neat studio apartment on the Esplanade. The property consists of:

Standard kitchen fully fitted
family bathroom
spacious lounge/bedroom
harbor views

To view the property please contact Mervin Donnelly

Features

Interior

Bedrooms	0.5
Bathrooms	1
Kitchens	1
Recep. Rooms	1
Furnished	No

Exterior

Security	Yes
Pool	No
Views	True