



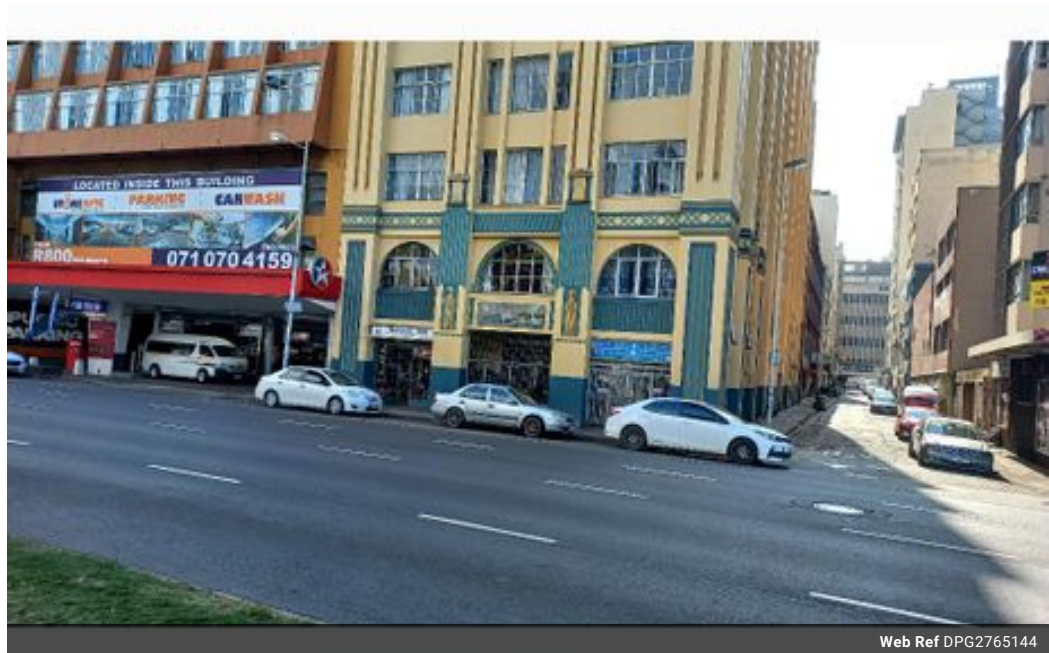
**Mervin Donnelly**  
061 696 8809  
mervin.d@dpg.co.za

Contact Head Office - Dormehl  
Lite

012 0000000

1170 Moulton Avenue  
Waverley  
0184

## 0.5 Bedroom Apartment Block For Sale in Esplanade



Web Ref DPG2765144



**R285,000**

0.5 1

**Monthly Bond Repayment** R2,893.40

Calculated over 20 years at 10.75% with no deposit.

**Transfer Costs** R15,517.00 **Bond Costs** R10,985.00

These calculations are only a guide. Please ask your conveyancer for exact calculations.

**Monthly Levy** R2,200

## 0.5 Bedroom Apartment Block For Sale in Esplanade

Batchelor apartment for sale on the Esplanade!!!

Dormehl Phalane proudly presents this batchelor apartment for sale on the Esplanade. The property consists of:

360 degree harbour views  
family bathroom  
spacious lounge/bedroom  
kitchen has built in cupboards  
no parking

To view this property please contact Mervin Donnelly

## Features

Interior		Exterior	
Bedrooms	0.5	Pool	No
Bathrooms	1		
Recep. Rooms	1		

