



**Mervin Donnelly**  
061 696 8809  
mervin.d@dpg.co.za

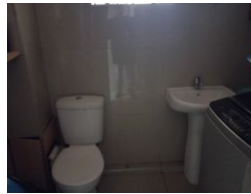
Contact Head Office - Dormehl  
Lite

012 0000000

1170 Moulton Avenue  
Waverley  
0184



Web Ref DPR1332



**R625,000**

🛏 1 🚿 1 🏠 1

**Monthly Bond Repayment** R6,239.87

Calculated over 20 years at 10.5% with no deposit.

**Transfer Costs** R23,709.00 **Bond Costs** R17,680.00

These calculations are only a guide. Please ask your conveyancer for exact calculations.

Calling all first time buyers and investors!!!

Dormehl Phalane presents this 1 bedroom apartment for sale on the Esplanade. The property consists of:

Huge lounge  
Fully fitted kitchen  
spacious bedroom with bics  
family bathroom  
1 parking  
needs fixing  
enclosed balcony

To view this property please contact Mervin Donnelly

## Features

### Interior

Bedrooms	1
Bathrooms	1
Kitchens	1
Recep. Rooms	1
Furnished	No

### Exterior

Garages	1
Security	No
Pool	No
Views	False