



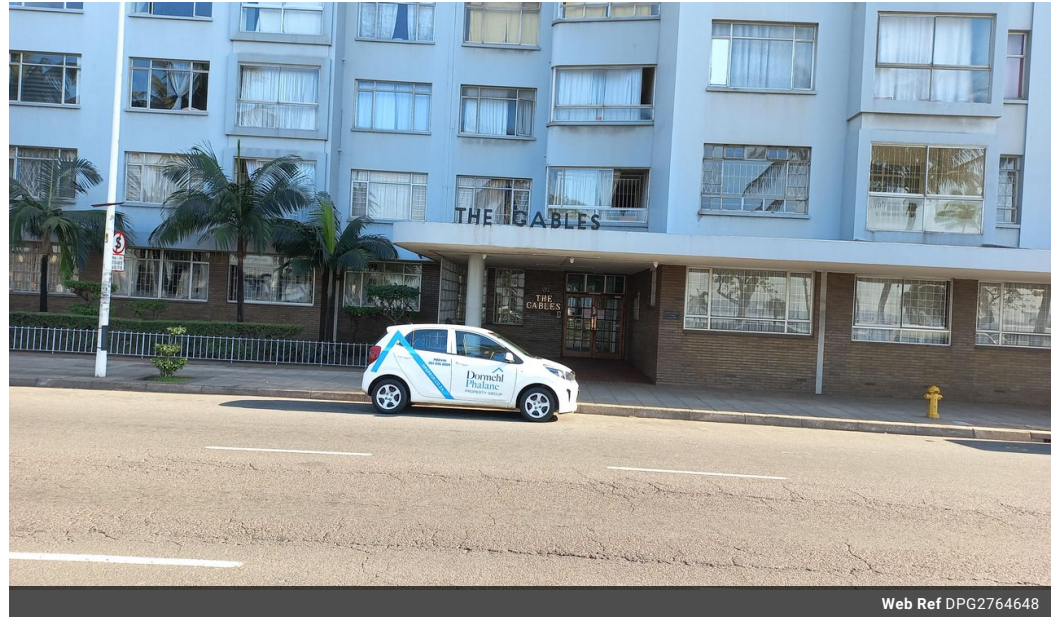
**Mervin Donnelly**  
061 696 8809  
mervin.d@dpg.co.za

Contact Head Office - Dormehl  
Lite

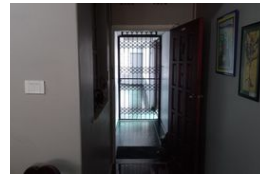
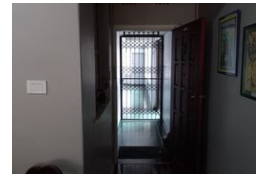
012 0000000

1170 Moulton Avenue  
Waverley  
0184

## 2.5 Bedroom Apartment For Sale in Esplanade



Web Ref DPG2764648



# R900,000

2.5 1

**Monthly Bond Repayment** R9,137.06

Calculated over 20 years at 10.75% with no deposit.

**Transfer Costs** R28,244.00 **Bond Costs** R21,450.00

These calculations are only a guide. Please ask your conveyancer for exact calculations.

## 2.5 Bedroom Apartment For Sale in Esplanade

Stunning 2.5 bedroom apartment for sale on the Esplanade!!!

Dormehl Phalane proudly presents this stunning 2.5 bedroom apartment opposite the Durban harbor. The property consist of:  
high end finishes  
kitchen fully fitted with UCO,HOB,extractor fan, granite tops  
Family bathroom with shower  
separate toilet  
enclosed balcony that fits a double bed  
Both bedrooms are fully fitted with built in cupboards  
spacious lounge  
tiled  
1 undercover parking

To view this property please contact Mervin Donnelly

## Features

### Interior

Bedrooms	2.5
Bathrooms	1
Recep. Rooms	1

### Exterior

Carports / Parkings	1
Pool	No

