



Mervin Donnelly
061 696 8809
mervin.d@dpg.co.za

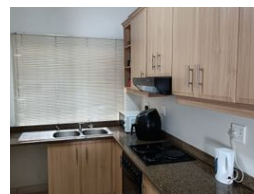
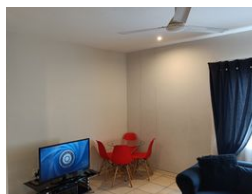
Contact Head Office - Dormehl
Lite

012 0000000

1170 Moulton Avenue
Waverley
0184



Web Ref DPR3441



R925,000

2 2 2

Monthly Bond Repayment R9,390.87

Calculated over 20 years at 10.75% with no deposit.

Transfer Costs R30,412.00 **Bond Costs** R23,335.00

These calculations are only a guide. Please ask your conveyancer for exact calculations.

Monthly Levy R1,500 **Monthly Rates** R800

Modern 2 bedroom apartment for sale in Essenwood!!!

Levies: R1500

Rates: R800

Dormehl Phalane properties proudly presents this modern 2 bedroom apartment for sale in Essenwood. This property consists of:

size : 65 sqm
close to all amenities
apartment tiled
kitchen fully fitted with HOB,UCO,bics and extractor fan,granite tops
spacious lounge
2 bedrooms fully fitted with bics
family bathroom with shower and bathroom
2 undercover parkings
remote control access

To view this property contact Mervin Donnelly

Features

Interior

Bedrooms	2
Bathrooms	2
Kitchens	1
Recep. Rooms	1
Furnished	No

Exterior

Garages	2
Security	No
Pool	No
Views	False