



Mervin Donnelly
061 696 8809
mervin.d@dpg.co.za

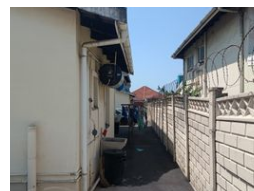
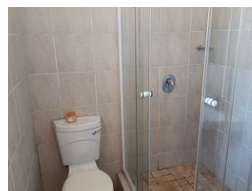
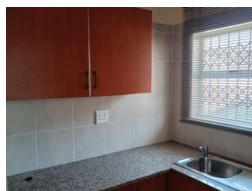
Contact Head Office - Dormehl Lite

012 0000000

1170 Moulton Avenue
Waverley
0184



Web Ref DPR16356



R3,950,000

10 10

Monthly Bond Repayment R40,101.54
Calculated over 20 years at 10.75% with no deposit.

Transfer Costs R275,550.00 **Bond Costs** R51,610.00
These calculations are only a guide. Please ask your conveyancer for exact calculations.

Monthly Rates R2,130

Calling all investors !!!

Dormehl Phalane proudly presents this well maintained investment property in Glenwood for sale. The property consists of:
2x1 studio, 1 bathroom loft apartments
4x2 bedroom 2 bathroom apartments second floor
prepaid electricity in all units
ample parking
electric gate
close to DUt
All units are fully tenanted
rental income R40 000

To view this property please contact Mervin Donnelly

Features

Interior		Exterior	
Bedrooms	10	Carports / Parkings	10
Bathrooms	10	Security	Yes
Kitchens	10	Pool	No
Recep. Rooms	10	Views	False
Furnished	No		