



Stacy Fernandez
069 354 3613
stacy.f@dpg.co.za

Contact Head Office - Dormehl
Lite

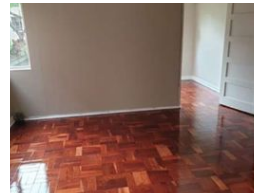
012 0000000

1170 Moulton Avenue
Waverley
0184

1 Bedroom Apartment For Sale in Glenwood



Web Ref DPR19574



R725,000

1 1

Monthly Bond Repayment R7,238.25

Calculated over 20 years at 10.5% with no deposit.

Transfer Costs R25,877.00 **Bond Costs** R19,565.00

These calculations are only a guide. Please ask your conveyancer for exact calculations.

Monthly Levy R1,524.7 **Monthly Rates** R689.8

Cozy One Bedroom Apartment for sale!

Dormehl Phalane Property Group offers you this cozy one bedroom apartment is fully fitted with beautiful wooden flooring. There is a fitted kitchen with standard finishes with lounge and enclosed sun room which can be used as a office or dining area. Standard bathroom with one parking. This property is situated in a well maintained complex it also has a communal play gym area and lovely garden where you can relax with your kids. Close to all amenities.

Features

Interior

Bedrooms	1
Bathrooms	1
Kitchens	1
Recep. Rooms	2
Furnished	No

Exterior

Carports / Parkings	1
Security	No
Pool	No
Views	True

Sizes

Floor Size	74m²
------------	------