

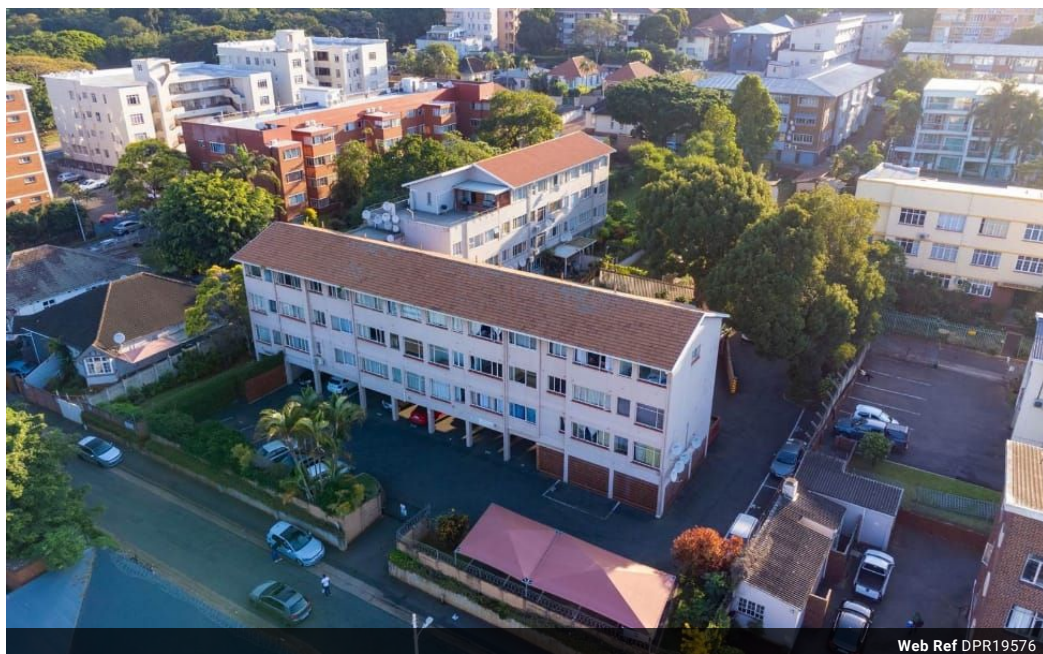


Stacy Fernandez
069 354 3613
stacy.f@dpg.co.za

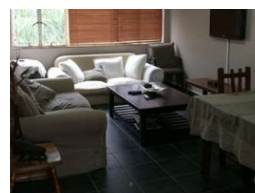
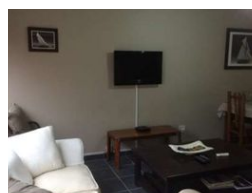
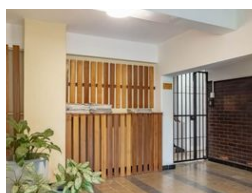
Contact Head Office - Dormehl
Lite

012 0000000

1170 Moulton Avenue
Waverley
0184



Web Ref DPR19576



R695,000

1 1

Monthly Bond Repayment R7,055.84

Calculated over 20 years at 10.75% with no deposit.

Transfer Costs R23,730.00 **Bond Costs** R17,680.00

These calculations are only a guide. Please ask your conveyancer for exact calculations.

Monthly Levy R2,000 **Monthly Rates** R576.7

Cozy One Bedroom Apartment for sale!

Dormehl Phalane Property group offers you this fully fitted one bedroom apartment with beautiful modern finishes. There is a fitted kitchen with standard finishes with lounge and one family bathroom. This apartment is situated in a well maintained complex with one open parking bay , it has a lovely garden area. Safe and secured .Close to all too all shops ,hospitals ,schools and easy access to freeway. Price negotiable.

Features

Interior

Bedrooms	1
Bathrooms	1
Kitchens	1
Recep. Rooms	1
Furnished	No

Exterior

Carports / Parkings	1
Security	No
Pool	No
Views	True

Sizes

Floor Size	62m²
------------	------