

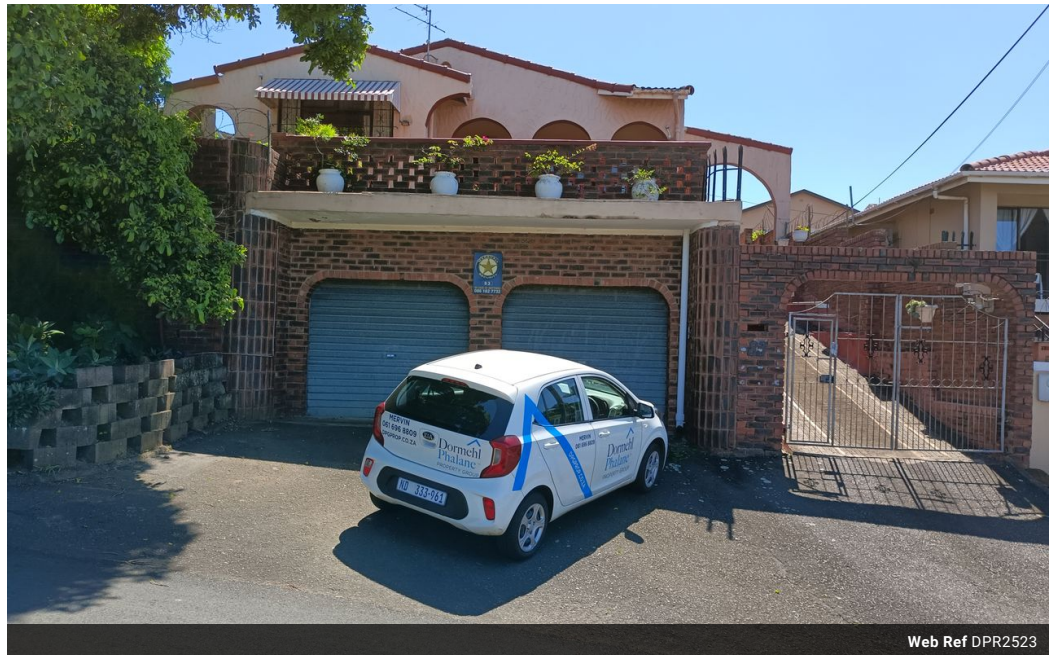


Mervin Donnelly
061 696 8809
mervin.d@dpg.co.za

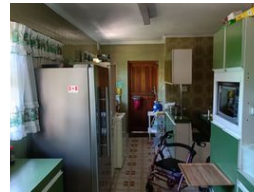
Contact Head Office - Dormehl
Lite

012 0000000

1170 Moulton Avenue
Waverley
0184



Web Ref DPR2523



R1,250,000

🛏 4 🚿 3 🚗 2

Monthly Bond Repayment R12,690.36

Calculated over 20 years at 10.75% with no deposit.

Transfer Costs R36,117.00

Bond Costs R27,105.00

These calculations are only a guide. Please ask your conveyancer for exact calculations.

Monthly Rates R900

Spacious family home for sale in Effingham!!!

Dormehl Phalane proudly presents this spacious family home for sale in Effingham. The property consists of:

3 Spacious bedrooms with fully fitted built in cupboards
main bedroom has an ensuite
family bathroom
fully fitted kitchen with built in cupboards
large lounge
court yard
double lock up garage
ample parking space
granny cottage one bedroom ,lounge,kitchen and bathroom

To view this property contact Mervin Donnelly

Features

Interior

Bedrooms	4
Bathrooms	3
Kitchens	2
Recep. Rooms	2
Furnished	No

Exterior

Garages	2
Security	No
Pool	No
Views	False