



Thembi Bhengu
072 669 5838
thembib@dpg.co.za

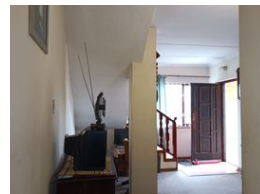
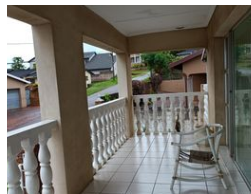
Contact Apex

031 2762023

558 Mountbatten Drive
Reservoir Hills
Durban
4090



Web Ref DPR7423



R1,250,000

6 3 2

Monthly Bond Repayment R12,690.36

Calculated over 20 years at 10.75% with no deposit.

Transfer Costs R36,117.00

Bond Costs R27,105.00

These calculations are only a guide. Please ask your conveyancer for exact calculations.

SIX BEDROOM HOUSE FOR SALE AT KWAMASHU NEAR NEWLAND EAST

Dormehl Phalane Property Group Apex presents this massive six-bedroom house available for sale at KwaMashu near Newland East.

This home with spacious rooms is ideal for a larger family or property developers since it has a huge potential for income generation.

This property offers a very spacious lounge area on the top floor which can be converted into an open plan lounge and dining or office area. This lounge has stunning chandeliers and an air-conditioning system. On the side of the lounge there is a mini office space.

The house welcomes you with a dining room on the bottom floor leading to the fully fitted kitchen and three bedrooms with built-in cupboards. The kitchen area of this property leads to an immaculate entertainment area that can be utilized for starry dinner nights with friends and family to enjoy...

Features

Interior

Bedrooms	6
Bathrooms	3
Kitchens	1
Recep. Rooms	2
Furnished	No

Exterior

Garages	2
Carports / Parkings	2
Security	No
Dom. Accom.	1
Pool	No
Views	False

Sizes

Floor Size	418m ²
Land Size	418m ²

